

À des fins de recherche uniquement

Anticorps Polyclonal de lapin anti-BOP1



Numéro de catalogue: 28366-1-AP

2 Publications

Informations de base

Numéro de catalogue:

28366-1-AP

Taille:

150ul , Concentration: 300 µg/ml by Nanodrop and 200 µg/ml by Bradford method using BSA as the standard;

Hôte:

Lapin

Isotype:

IgG

Immunogen Catalog Number:

AG26669

Numéro d'acquisition GenBank:

BC013787

Identification du gène (NCBI):

23246

Nom complet:

block of proliferation 1

MW calculé

84 kDa

MW observés:

117 kDa

Méthode de purification:

Purification par affinité contre l'antigène

Dilutions recommandées:

WB 1:500-1:2000

IHC 1:50-1:500

IF 1:50-1:500

Applications

Applications testées:

IF, IHC, WB, ELISA

Demandes citées:

WB

Spécificité de l'espèce:

Humain, souris

Espèces citées:

Humain

Contrôles positifs:

WB : cellules DU 145, cellules HeLa, cellules NCI-H1299

IHC : tissu de cancer du côlon humain, tissu testiculaire de souris

IF : cellules PC-3, cellules MCF-7

Remarque-IHC: il est suggéré de démasquer l'antigène avec un tampon de TE buffer pH 9,0; (*) A défaut, 'le démasquage de l'antigène peut être 'effectué avec un tampon citrate pH 6,0.

Informations générales

Block of Proliferation 1(BOP1) protein was first isolated from a mouse, and the truncation protein may led to cell cycle arrest. Bop1 plays a role in processing of the 28S and 5.8S rRNAs (ribosomal RNAs) to regulate ribosome biogenesis. And Bop1 also act as a component of Pes1/Bop1/WDR21 (PeBoW) complex for mature 60S ribosome, and consequently acts during cell division at G1 checkpoints (PMID:18670790; PMID:26940494). What's more, abnormal expression of BOP1 was associated with liver or colorectal cancers(PMID:16804918). The molecular weight of the protein we detected was slightly higher, about 117 kd, which is also seen in the article(PMID: 30100995).

Publications notables

Autrice	Pubmed ID	Journal	Application
Lanjuan Mi	34868955	Front Oncol	WB
Miao Bai	34512161	Int J Biol Sci	WB

Stockage

Stockage:

Stocker à -20°C. Stable pendant un an après l'expédition.

Tampon de stockage:

PBS avec azoture de sodium à 0,02 % et glycérol à 50 % pH 7,3

L'aliquotage n'est pas nécessaire pour le stockage à -20C

*** Les 20ul contiennent 0,1% de BSA.

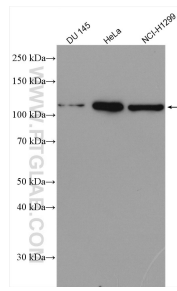
For technical support and original validation data for this product please contact:

T: 1 (888) 4PTGLAB (1-888-478-4522) (toll free in USA), or 1(312) 455-8498 (outside USA)

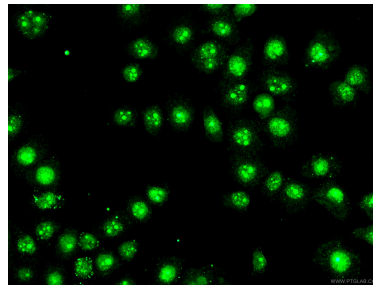
E: proteintech@ptglab.com
W: ptglab.com

This product is exclusively available under Proteintech Group brand and is not available to purchase from any other manufacturer.

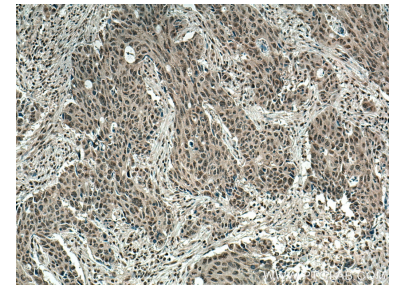
Données de validation sélectionnées



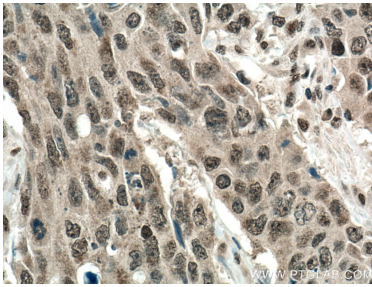
Various lysates were subjected to SDS PAGE followed by western blot with 28366-1-AP (BOP1 antibody) at dilution of 1:1000 incubated at room temperature for 1.5 hours.



Immunofluorescent analysis of (4% PFA) fixed PC-3 cells using 28366-1-AP (BOP1 antibody) at dilution of 1:100 and CoraLite488-Conjugated AffiniPure Goat Anti-Rabbit IgG(H+L).



Immunohistochemical analysis of paraffin-embedded human colon cancer tissue slide using 28366-1-AP (BOP1 antibody) at dilution of 1:200 (under 10x lens). Heat mediated antigen retrieval with Tris-EDTA buffer (pH 9.0).



Immunohistochemical analysis of paraffin-embedded human colon cancer tissue slide using 28366-1-AP (BOP1 antibody) at dilution of 1:200 (under 40x lens). Heat mediated antigen retrieval with Tris-EDTA buffer (pH 9.0).