

À des fins de recherche uniquement

Anticorps Polyclonal de lapin anti-ARPC1B



Numéro de catalogue: 28368-1-AP

Phare

1 Publications

Informations de base

Numéro de catalogue:
28368-1-AP

Taille:
150ul, Concentration: 600 µg/ml by Nanodrop and 300 µg/ml by Bradford method using BSA as the standard;

Hôte:
Lapin

Isotype:
IgG

Immunogen Catalog Number:
AG29001

Numéro d'acquisition GenBank:
BC007555

Identification du gène (NCBI):
10095

Nom complet:
actin related protein 2/3 complex, subunit 1B, 41kDa

MW calculé

41 kDa

MW observés:

37 kDa

Méthode de purification:
Purification par affinité contre l'antigène

Dilutions recommandées:
WB 1:1000-1:6000
IP 0.5-4.0 ug for IP and 1:500-1:2000 for WB
IHC 1:250-1:1000

Applications

Applications testées:
IHC, IP, WB, ELISA

Demandes citées:
WB

Spécificité de l'espèce:
Humain

Espèces citées:
Humain, souris

Remarque-IHC: il est suggéré de démasquer l'antigène avec un tampon de TE buffer pH 9,0; (*) A défaut, le démasquage de l'antigène peut être effectué avec un tampon citrate pH 6,0.

Contrôles positifs:

WB : cellules HeLa, cellules HEK-293T

IP : cellules HeLa,

IHC : tissu de cancer du côlon humain, tissu de cancer du poumon humain

Informations générales

ARPC1B also known as ARC41, p41-ARC, or p40-ARC, is one of seven subunits of the human Arp2/3 protein complex, that belongs to the SOP2 family. ARPC1B localizes on centrosomes and has a distinct role in centrosomal homeostasis. ARPC1B is both a physiological activator and substrate of Aurora A kinase, and these interactions help to maintain mitotic integrity in mammalian cells. In recent research, ARPC1B is selected as a candidate prediction marker for sensitivity of Choroidal malignant melanomas to radiotherapy.

Publications notables

Autrice	Pubmed ID	Journal	Application
Junjing Huang	37304283	Front Immunol	WB

Stockage

Stockage:
Stocker à -20°C. Stable pendant un an après l'expédition.

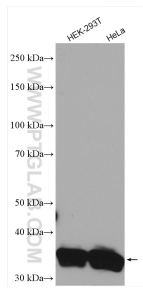
Tampon de stockage:
PBS avec azoture de sodium à 0,02 % et glycérol à 50 % pH 7,3
L'aliquotage n'est pas nécessaire pour le stockage à -20C

*** Les 20ul contiennent 0,1% de BSA.

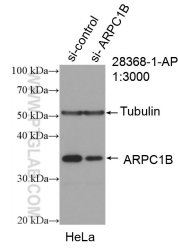
For technical support and original validation data for this product please contact:
T: 1 (888) 4PTGLAB (1-888-478-4522) (toll free in USA), or 1(312) 455-8498 (outside USA)
E: proteintech@ptglab.com
W: ptglab.com

This product is exclusively available under Proteintech Group brand and is not available to purchase from any other manufacturer.

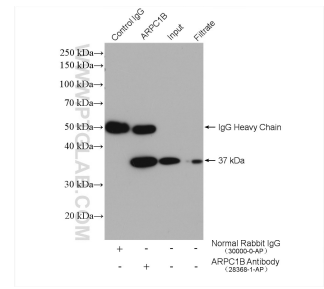
Données de validation sélectionnées



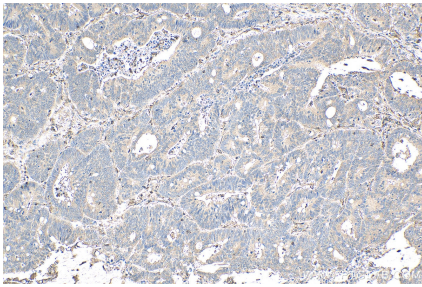
Various lysates were subjected to SDS PAGE followed by western blot with 28368-1-AP (ARPC1B antibody) at dilution of 1:3000 incubated at room temperature for 1.5 hours.



WB result of ARPC1B antibody (28368-1-AP; 1:3000; incubated at room temperature for 1.5 hours) with sh-Control and sh-ARPC1B transfected HeLa cells.



IP result of anti-ARPC1B (IP:28368-1-AP, 4ug; Detection:28368-1-AP 1:1000) with HeLa cells lysate 1600 ug.



Immunohistochemical analysis of paraffin-embedded human colon cancer tissue slide using 28368-1-AP (ARPC1B antibody) at dilution of 1:500 (under 10x lens). Heat mediated antigen retrieval with Tris-EDTA buffer (pH 9.0).