

À des fins de recherche uniquement

Anticorps Polyclonal de lapin anti-MSTO1



Numéro de catalogue: 28400-1-AP **Phare**

Informations de base

Numéro de catalogue:
28400-1-AP

Taille:
150ul, Concentration: 450 µg/ml by
Nanodrop and 300 µg/ml by Bradford
method using BSA as the standard;

Hôte:
Lapin

Isotype:
IgG

Immunogen Catalog Number:
AG29067

Numéro d'acquisition GenBank:
BC002535

Identification du gène (NCBI):
55154

Nom complet:
misato homolog 1 (Drosophila)

MW observés:
57-62 kDa

Méthode de purification:
Purification par affinité contre
l'antigène

Dilutions recommandées:
WB 1:500-1:2000

Applications

Applications testées:
WB, ELISA

Spécificité de l'espèce:
Humain

Contrôles positifs:

WB : cellules HeLa, cellules HepG2

Informations générales

MSTO1, also named as LST005 and SLTP005, belongs to the misato family. Human MSTO1 is a ubiquitously expressed, evolutionary conserved protein with homologous regions to GTPases. MSTO1 is a cytoplasmic protein that modulates mitochondrial dynamics by promoting mitochondrial fusion. MSTO1 has 7 isoforms produced by alternative splicing. (PMID: 33612823)

Stockage

Stockage:

Stocker à -20°C. Stable pendant un an après l'expédition.

Tampon de stockage:

PBS avec azoture de sodium à 0,02 % et glycérol à 50 % pH 7,3

L'aliquotage n'est pas nécessaire pour le stockage à -20C

***** Les 20ul contiennent 0,1% de BSA.**

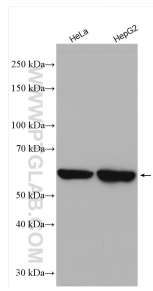
For technical support and original validation data for this product please contact:

T: 1 (888) 4PTGLAB (1-888-478-4522) (toll free
in USA), or 1(312) 455-8498 (outside USA)

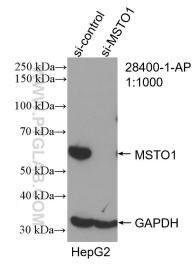
E: proteintech@ptglab.com
W: ptglab.com

This product is exclusively available under Proteintech Group brand and is not available to purchase from any other manufacturer.

Données de validation sélectionnées



Various lysates were subjected to SDS PAGE followed by western blot with 28400-1-AP (MSTO1 antibody) at dilution of 1:1000 incubated at room temperature for 1.5 hours.



WB result of MSTO1 antibody (28400-1-AP; 1:1000; incubated at room temperature for 1.5 hours) with sh-Control and sh-MSTO1 transfected HepG2 cells.