

À des fins de recherche uniquement

# Anticorps Polyclonal de lapin anti-SEMA4C



Numéro de catalogue: 28402-1-AP

## Informations de base

<b>Numéro de catalogue:</b> 28402-1-AP	<b>Numéro d'acquisition GenBank:</b> BC109104	<b>Méthode de purification:</b> Purification par affinité contre l'antigène
<b>Taille:</b> 150ul, Concentration: 900 µg/ml by Nanodrop;	<b>Identification du gène (NCBI):</b> 54910	<b>Dilutions recommandées:</b> WB 1:1000-1:4000 IHC 1:50-1:500
<b>Hôte:</b> Lapin	<b>Nom complet:</b> sema domain, immunoglobulin domain (Ig), transmembrane domain (TM) and short cytoplasmic domain, (semaphorin) 4C	
<b>Isotype:</b> IgG	<b>MW calculé:</b> 833 aa, 93 kDa	
<b>Immunogen Catalog Number:</b> AG29143	<b>MW observés:</b> 93 kDa	

## Applications

### Applications testées:

IHC, WB, ELISA

### Spécificité de l'espèce:

Humain, rat, souris

**Remarque-IHC: il est suggéré de démasquer l'antigène avec un tampon de TE buffer pH 9,0; (\*) À défaut, 'le démasquage de l'antigène peut être effectué avec un tampon citrate pH 6,0.**

### Contrôles positifs:

**WB:** tissu cérébral humain foetal, tissu cérébral de rat, tissu cérébral de souris

**IHC:** tissu de tumeur ovarienne humain, tissu de cancer de l'estomac humain

## Informations générales

SEMA4C is a member of transmembrane semaphorin proteins which regulate axonal guidance in the developing nervous system. Furthermore, studies have demonstrated that sema4C was also implicated in biological events outside the nervous system, such as cell migration, tumor development, and terminal myogenic differentiation (PMID: 36010604). SEMA4C is highly expressed in breast, lung, cervical, and liver cancers. SEMA4C is involved in oncogenic signaling and is a potential therapeutic target for invasive breast cancer, hepatocellular carcinoma, glioma, and osteosarcoma (PMID: 33177246).

## Stockage

### Stockage:

Stocker à -20°C. Stable pendant un an après l'expédition.

### Tampon de stockage:

PBS avec azoture de sodium à 0,02 % et glycérol à 50 % pH 7,3  
L'aliquotage n'est pas nécessaire pour le stockage à -20C

\*\*\* Les 20ul contiennent 0,1% de BSA.

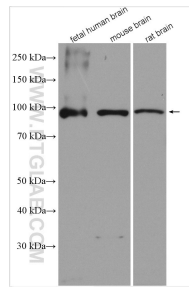
For technical support and original validation data for this product please contact:

T: 1 (888) 4PTGLAB (1-888-478-4522) (toll free in USA), or 1(312) 455-8498 (outside USA)

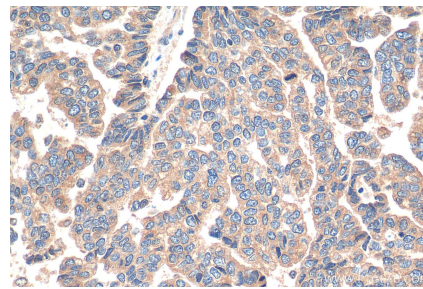
E: [proteintech@ptglab.com](mailto:proteintech@ptglab.com)  
W: [ptglab.com](http://ptglab.com)

This product is exclusively available under Proteintech Group brand and is not available to purchase from any other manufacturer.

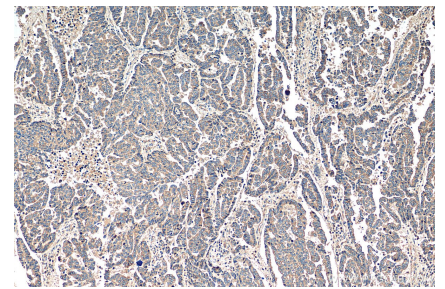
## Données de validation sélectionnées



Various lysates were subjected to SDS PAGE followed by western blot with 28402-1-AP (SEMA4C antibody) at dilution of 1:2000 incubated at room temperature for 1.5 hours.



Immunohistochemical analysis of paraffin-embedded human ovary tumor tissue slide using 28402-1-AP (SEMA4C antibody) at dilution of 1:200 (under 40x lens). Heat mediated antigen retrieval with Tris-EDTA buffer (pH 9.0).



Immunohistochemical analysis of paraffin-embedded human ovary tumor tissue slide using 28402-1-AP (SEMA4C antibody) at dilution of 1:200 (under 10x lens). Heat mediated antigen retrieval with Tris-EDTA buffer (pH 9.0).