

À des fins de recherche uniquement

Anticorps Polyclonal de lapin anti-ILT-3/LILRB4



Numéro de catalogue: 28422-1-AP

Informations de base

Numéro de catalogue:

28422-1-AP

Taille:

150ul, Concentration: 800 µg/ml by Nanodrop;

Hôte:

Lapin

Isotype:

IgG

Immunogen Catalog Number:

AG28928

Numéro d'acquisition GenBank:

BC026309

Identification du gène (NCBI):

11006

Nom complet:

leukocyte immunoglobulin-like receptor, subfamily B (with TM and ITIM domains), member 4

MW calculé

448 aa, 49 kDa

MW observés:

49 kDa

Méthode de purification:

Purification par affinité contre l'antigène

Dilutions recommandées:

WB 1:1000-1:4000

Applications

Applications testées:

WB, ELISA

Spécificité de l'espèce:

Humain, souris

Contrôles positifs:

WB : tissu pulmonaire de souris, tissu cardiaque de souris

Informations générales

LILRB4 is an inhibitory receptor in the LILR family mainly expressed on normal and malignant human cells of myeloid origin. LILRB4 is activated and subsequently recruits adaptors to cytoplasmic immunoreceptor tyrosine inhibitory motifs to initiate different signaling cascades, thus playing an important role in physiological and pathological conditions, including autoimmune diseases, microbial infections, and cancers.

Stockage

Stockage:

Stocker à -20°C. Stable pendant un an après l'expédition.

Tampon de stockage:

PBS avec azoture de sodium à 0,02 % et glycérol à 50 % pH 7,3

L'aliquotage n'est pas nécessaire pour le stockage à -20C

*** Les 20ul contiennent 0,1% de BSA.

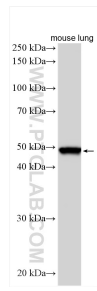
For technical support and original validation data for this product please contact:

T: 1 (888) 4PTGLAB (1-888-478-4522) (toll free in USA), or 1(312) 455-8498 (outside USA)

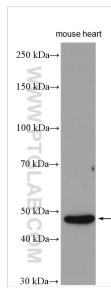
E: proteintech@ptglab.com
W: ptglab.com

This product is exclusively available under Proteintech Group brand and is not available to purchase from any other manufacturer.

Données de validation sélectionnées



Mouse lung tissue were subjected to SDS PAGE followed by western blot with 28422-1-AP (LILRB4 antibody) at dilution of 1:2000 incubated at room temperature for 1.5 hours.



mouse heart tissue were subjected to SDS PAGE followed by western blot with 28422-1-AP (LILRB4 antibody) at dilution of 1:1000 incubated at room temperature for 1.5 hours.