

À des fins de recherche uniquement

Anticorps Polyclonal de lapin anti-KMT2C



Numéro de catalogue: 28437-1-AP

2 Publications

Informations de base

Numéro de catalogue: 28437-1-AP	Numéro d'acquisition GenBank: NM_170606	Méthode de purification: Purification par affinité contre l'antigène
Taille: 150ul , Concentration: 500 µg/ml by Nanodrop;	Identification du gène (NCBI): 58508	Dilutions recommandées: WB 1:500-1:1000
Hôte: Lapin	Nom complet: myeloid/lymphoid or mixed-lineage leukemia 3	
Isotype: IgG	MW calculé 541 kDa	
Immunogen Catalog Number: AG28875	MW observés: 541kDa, 269 kDa	

Applications

Applications testées: WB, ELISA	Contrôles positifs: WB : cellules K-562,
Demandes citées: ChIP, WB	
Spécificité de l'espèce: Humain	
Espèces citées: Humain	

Informations générales

Lysine (K)-specific methyltransferase 2C (KMT2C, also known as MLL3) belongs to the mixed-lineage leukemia (MLL) family of histone methyltransferases which methylate the histone 3 tail at lysine 4 (H3K4) as part of the complex proteins associated with Set 1 (COMPASS) complex. Although originally identified as oncogenic fusions in leukemia, genome-wide mutation studies have revealed frequent, presumably loss-of-function, mutations in various members of the MLL family, including MLL2/KMT2B, MLL3/KMT2C, and MLL4/KMT2D in a variety of malignancies, particularly solid tumors. Mechanistic studies of KMT2C in normal cells have focused primarily on its role in enhancer regulation by deposition of H3K4me1 marks.

Publications notables

Autrice	Pubmed ID	Journal	Application
Juan-Juan Li	34999393	Int Immunopharmacol	WB
Tanjing Song	36935008	J Biol Chem	ChIP

Stockage

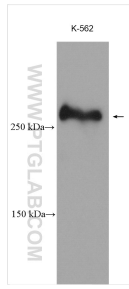
Stockage:
Stocker à -20°C. Stable pendant un an après l'expédition.
Tampon de stockage:
PBS avec azoture de sodium à 0,02 % et glycérol à 50 % pH 7,3
L'aliquote n'est pas nécessaire pour le stockage à -20C

*** Les 20ul contiennent 0,1% de BSA.

For technical support and original validation data for this product please contact:
T: 1 (888) 4PTGLAB (1-888-478-4522) (toll free in USA), or 1(312) 455-8498 (outside USA)
E: proteintech@ptglab.com
W: ptglab.com

This product is exclusively available under Proteintech Group brand and is not available to purchase from any other manufacturer.

Données de validation sélectionnées



K-562 cells were subjected to SDS PAGE followed by western blot with 28437-1-AP (KMT2C antibody) at dilution of 1:500 incubated at room temperature for 1.5 hours.