

À des fins de recherche uniquement

Anticorps Polyclonal de lapin anti-Involucrin



Numéro de catalogue: 28462-1-AP

6 Publications

Informations de base

| | | |
|---|--|--|
| Numéro de catalogue: 28462-1-AP | Numéro d'acquisition GenBank: NM_005547 | Méthode de purification: Purification par affinité contre l'antigène |
| Taille: 150ul, Concentration: 450 µg/ml by Nanodrop; | Identification du gène (NCBI): 3713 | Dilutions recommandées: WB 1:1000-1:4000 IHC 1:50-1:500 IF 1:50-1:500 |
| Hôte: Lapin | Nom complet: involucrin | |
| Isotype: IgG | MW calculé: 68 kDa | |
| Immunogen Catalog Number: AG29585 | MW observés: 120 kDa | |

Applications

Applications testées:
FC, IF, IHC, WB, ELISA

Demandes citées:
IF, IHC, WB

Spécificité de l'espèce:
Humain

Espèces citées:
Humain, souris

Contrôles positifs:

WB : cellules A431, cellules HT-1080, cellules HT-29

IHC : tissu d'amygdalite humaine, tissu de cancer de l'œsophage humaine

IF : cellules A431,

Remarque-IHC: il est suggéré de démasquer l'antigène avec un tampon de TE buffer pH 9,0; (*) À défaut, le démasquage de l'antigène peut être effectué avec un tampon citrate pH 6,0.

Informations générales

Involucrin is a protein precursor of the epidermal cornified envelope that is assembled in the outermost layers of the epidermis. Involucrin expression is restricted to the suprabasal epidermal layers (spinous and granular layers) during normal keratinocyte differentiation and is a useful marker of terminal differentiation. The predicted MW of involucrin is 68 kDa, but it also forms 120 kDa dimers, while different reports provided variable results ranging from 90-140 kDa. (PMID: 11099111, 1503502, 12150517)

Publications notables

| Autrice | Pubmed ID | Journal | Application |
|-----------------|-----------|---------------------|-------------|
| Zhenzhuo Li | 34562563 | J Ethnopharmacol | WB,IHC |
| Yushi Katsuyama | 36047208 | Biol Pharm Bull | WB |
| Jie-Fang Gao | 35533554 | Int Immunopharmacol | IF |

Stockage

Stockage:

Stocker à -20°C. Stable pendant un an après l'expédition.

Tampon de stockage:

PBS avec azoture de sodium à 0,02 % et glycérol à 50 % pH 7,3

L'aliquotage n'est pas nécessaire pour le stockage à -20C

***** Les 20ul contiennent 0,1% de BSA.**

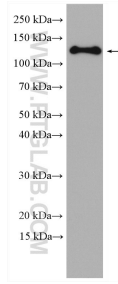
For technical support and original validation data for this product please contact:

T: 1 (888) 4PTGLAB (1-888-478-4522) (toll free in USA), or 1(312) 455-8498 (outside USA)

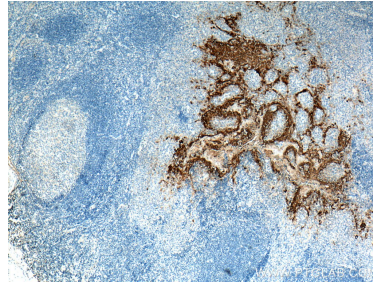
E: proteintech@ptglab.com
W: ptglab.com

This product is exclusively available under Proteintech Group brand and is not available to purchase from any other manufacturer.

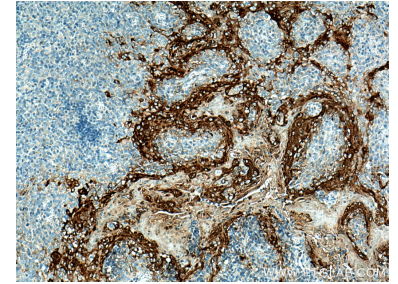
Données de validation sélectionnées



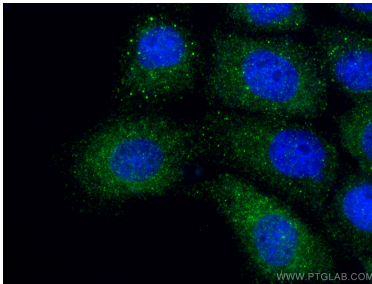
A431 cells were subjected to SDS PAGE followed by western blot with 28462-1-AP (Involucrin antibody) at dilution of 1:2000 incubated at room temperature for 1.5 hours.



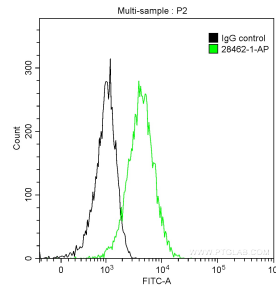
Immunohistochemical analysis of paraffin-embedded human tonsillitis tissue slide using 28462-1-AP (Involucrin antibody) at dilution of 1:200 (under 4x lens). Heat mediated antigen retrieval with Tris-EDTA buffer (pH 9.0).



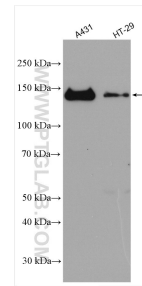
Immunohistochemical analysis of paraffin-embedded human tonsillitis tissue slide using 28462-1-AP (Involucrin antibody) at dilution of 1:200 (under 10x lens). Heat mediated antigen retrieval with Tris-EDTA buffer (pH 9.0).



Immunofluorescent analysis of (4% PFA) fixed A431 cells using Involucrin antibody (28462-1-AP) at dilution of 1:200 and CoraLite®488-Conjugated AffiniPure Goat Anti-Rabbit IgG(H+L).



1×10^6 A431 cells were intracellularly stained with 0.2 ug Anti-Human Involucrin (28462-1-AP) and CoraLite®488-Conjugated AffiniPure Goat Anti-Rabbit IgG(H+L) at dilution 1:1000 (green), and 0.2 ug Control Antibody. Cells were fixed with 90% MeOH.



Various lysates were subjected to SDS PAGE followed by western blot with 28462-1-AP (Involucrin antibody) at dilution of 1:10000 incubated at room temperature for 1.5 hours.