

À des fins de recherche uniquement

Anticorps Polyclonal de lapin anti-F4/80



Numéro de catalogue: 28463-1-AP

129 Publications

Informations de base

Numéro de catalogue: 28463-1-AP	Numéro d'acquisition GenBank: NM_010130	Méthode de purification: Purification par affinité contre l'antigène
Taille: 150ul , Concentration: 500 µg/ml by Nanodrop;	Identification du gène (NCBI): 13733	Dilutions recommandées: IHC 1:4000-1:12000 IF 1:50-1:500
Hôte: Lapin	Nom complet: EGF-like module containing, mucin-like, hormone receptor-like sequence	
Isotype: IgG	MW calculé 102 kDa	
Immunogen Catalog Number: AG28252		

Applications

Applications testées:

FC, IF, IHC, ELISA

Demandes citées:

FC, IF, IHC, WB

Spécificité de l'espèce:

rat, souris

Espèces citées:

Humain, porc, rat, souris

Contrôles positifs:

IHC : tissu splénique de souris, tissu cardiaque de souris, tissu cérébral de souris, tissu d'intestin grêle de souris, tissu hépatique de rat, tissu hépatique de souris, tissu pulmonaire de souris, tissu splénique de rat

IF : tissu splénique de souris, tissu hépatique de souris

Remarque-IHC: il est suggéré de démasquer l'antigène avec un tampon de TE buffer pH 9,0; (*) À défaut, 'le démasquage de l'antigène peut être effectué avec un tampon citrate pH 6,0.

Informations générales

Mouse F4/80, also named as EMR1 and Gp480, is a 160kd cell surface glycoprotein which is a member of the EGF TM7 family. The F4/80 molecule is solely expressed on the surface of macrophages and serves as a marker for mature macrophage tissues, including Kupffer cells in liver, splenic red pulp macrophages, brain microglia, gut lamina propria and Langerhans cells in the skin. The function of F4/80 is unclear, but it is speculated to be involved in macrophage adhesion events, cell migration or as a G protein-coupled signaling component of macrophages.

Publications notables

Autrice	Pubmed ID	Journal	Application
Yiran Song	36156376	Liver Int	IF
Tingting Qin	36225585	Front Pharmacol	IHC
Chao Jin	36188529	Front Pharmacol	IHC

Stockage

Stockage:

Stocker à -20°C. Stable pendant un an après l'expédition.

Tampon de stockage:

PBS avec azotate de sodium à 0,02 % et glycérol à 50 % pH 7,3

L'aliquotage n'est pas nécessaire pour le stockage à -20C

***** Les 20ul contiennent 0,1% de BSA.**

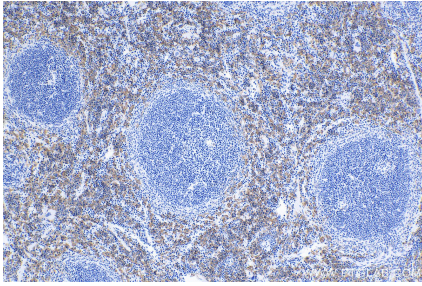
For technical support and original validation data for this product please contact:

T: 1 (888) 4PTGLAB (1-888-478-4522) (toll free in USA), or 1(312) 455-8498 (outside USA)

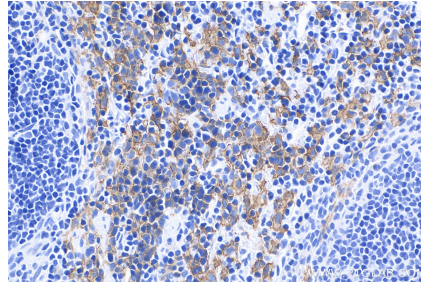
E: proteintech@ptglab.com
W: ptglab.com

This product is exclusively available under Proteintech Group brand and is not available to purchase from any other manufacturer.

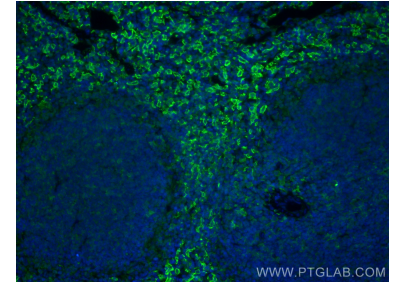
Données de validation sélectionnées



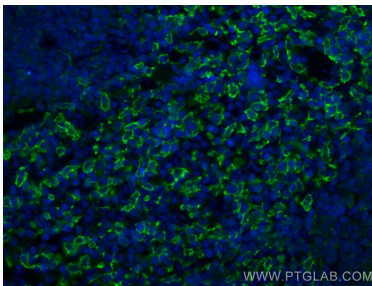
Immunohistochemical analysis of paraffin-embedded mouse spleen tissue slide using 28463-1-AP (F4/80 antibody) at dilution of 1:8000 (under 10x lens). Heat mediated antigen retrieval with Tris-EDTA buffer (pH 9.0).



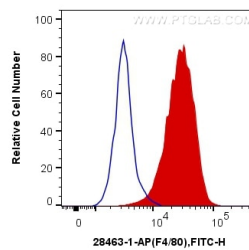
Immunohistochemical analysis of paraffin-embedded mouse spleen tissue slide using 28463-1-AP (F4/80 antibody) at dilution of 1:8000 (under 40x lens). Heat mediated antigen retrieval with Tris-EDTA buffer (pH 9.0).



Immunofluorescent analysis of (4% PFA) fixed mouse spleen tissue using F4/80 antibody (28463-1-AP) at dilution of 1:200 and CoraLite@488-Conjugated AffiniPure Goat Anti-Rabbit IgG(H+L).



Immunofluorescent analysis of (4% PFA) fixed mouse spleen tissue using F4/80 antibody (28463-1-AP) at dilution of 1:200 and CoraLite@488-Conjugated AffiniPure Goat Anti-Rabbit IgG(H+L).



1×10^6 RAW 264.7 cells were intracellularly stained with 0.4 ug Anti-Mouse F4/80 (28463-1-AP) and CoraLite@488-Conjugated AffiniPure Goat Anti-Rabbit IgG(H+L) at dilution 1:1000 (red), or 0.4 ug Control Antibody. Cells were fixed with 4% PFA and permeabilized with Flow Cytometry Perm Buffer (PF00011-C).