

À des fins de recherche uniquement

Anticorps Polyclonal de lapin anti-PHF17



Numéro de catalogue: 28472-1-AP **Phare**

Informations de base

Numéro de catalogue: 28472-1-AP	Numéro d'acquisition GenBank: BC032376	Méthode de purification: Purification par affinité contre l'antigène
Taille: 150ul, Concentration: 800 µg/ml by Nanodrop;	Identification du gène (NCBI): 79960	Dilutions recommandées: WB 1:1000-1:5000 IF 1:50-1:500
Hôte: Lapin	Nom complet: PHD finger protein 17	
Isotype: IgG	MW calculé: 96 kDa	
Immunogen Catalog Number: AG29675	MW observés: 65, 100-110 kDa	

Applications

Applications testées: IF, WB, ELISA	Contrôles positifs:
Spécificité de l'espèce: Humain	WB : cellules Jurkat, cellules A549, cellules HepG2, cellules MCF-7 IF : cellules HeLa,

Informations générales

PHF17, also named as JADE1 and KIAA1807, belongs to the JADE family. PHF17 codes for the Jade-1 protein. This protein interacts with histone acetyltransferase HBO1 and promotes histone acetylation in chromatin to regulate DNA replication and gene transcription. PHF17 is mostly expressed in the small intestine, prostate, mammary gland and kidney. PHF17 is involved in mitosis, meiosis and tumor suppression (PMID: 28134766). PHF17 has 3 isoforms with the molecular mass of 58 and 94-96 kDa. With modification, the MW of PHF17 may be migrated to about 65 and 100-110 kDa.

Stockage

Stockage:
Stocker à -20°C. Stable pendant un an après l'expédition.
Tampon de stockage:
PBS avec azoture de sodium à 0,02 % et glycérol à 50 % pH 7,3
L'aliquotage n'est pas nécessaire pour le stockage à -20C

*** Les 20ul contiennent 0,1% de BSA.

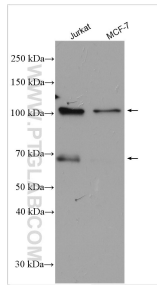
For technical support and original validation data for this product please contact:

T: 1 (888) 4PTGLAB (1-888-478-4522) (toll free in USA), or 1(312) 455-8498 (outside USA)

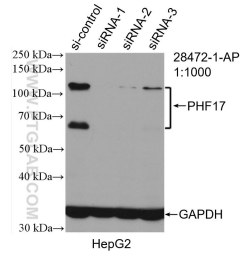
E: proteintech@ptglab.com
W: ptglab.com

This product is exclusively available under Proteintech Group brand and is not available to purchase from any other manufacturer.

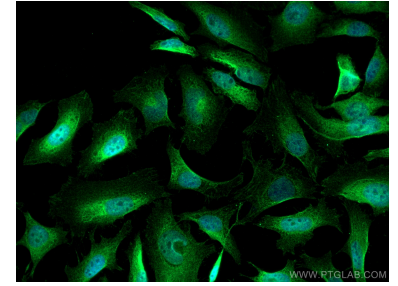
Données de validation sélectionnées



Various lysates were subjected to SDS PAGE followed by western blot with 28472-1-AP (PHF17 antibody) at dilution of 1:2500 incubated at room temperature for 1.5 hours.



WB result of PHF17 antibody (28472-1-AP; 1:1000; incubated at room temperature for 1.5 hours) with sh-Control and sh-PHF17 transfected HepG2 cells.



Immunofluorescent analysis of (4% PFA) fixed HeLa cells using PHF17 antibody (28472-1-AP) at dilution of 1:200 and CoraLite®488-Conjugated AffiniPure Goat Anti-Rabbit IgG(H+L).