

À des fins de recherche uniquement

Anticorps Polyclonal de lapin anti-CARD11



Numéro de catalogue: 28483-1-AP

Informations de base

| | | |
|---|---|--|
| Numéro de catalogue: 28483-1-AP | Numéro d'acquisition GenBank: BC111719 | Méthode de purification: Purification par affinité contre l'antigène |
| Taille: 150ul, Concentration: 800 µg/ml by Nanodrop and 367 µg/ml by Bradford method using BSA as the standard; | Identification du gène (NCBI): 84433 | Dilutions recommandées: WB 1:1000-1:8000 IHC 1:50-1:500 |
| Hôte: Lapin | Nom complet: caspase recruitment domain family, member 11 | |
| Isotype: IgG | MW calculé: 1154 aa, 133 kDa | |
| Immunogen Catalog Number: AG29355 | MW observés: 140-145 kDa | |

Applications

Applications testées:
IHC, WB, ELISA

Spécificité de l'espèce:
Humain

Contrôles positifs:

WB: cellules K-562, cellules Raji

IHC: tissu de cancer du côlon humain, tissu splénique humain

Remarque-IHC: il est suggéré de démasquer l'antigène avec un tampon de TE buffer pH 9,0; (*) À défaut, le démasquage de l'antigène peut être effectué avec un tampon citrate pH 6,0.

Informations générales

CARD11 also named as BIMP3 or CARMA1, is a 1154 amino acid protein, which contains one PDZ domain, one guanylate kinase-like domain, and one CARD domain. CARD11 localizes in the cytoplasm and co-localized with DPP4 in membrane raft. CARD11 is detected in adult peripheral blood leukocytes, thymus, spleen and liver. CARD11 also is found in CARD11 promyelocytic leukemia HL-60 cells, chronic myelogenous leukemia K-562 cells, Burkitt's lymphoma Raji cells and colorectal adenocarcinoma SW480 cells. CARD11 is involved in the co-stimulatory signal essential for T-cell receptor mediated T-cell activation.

Stockage

Stockage:
Stocker à -20°C. Stable pendant un an après l'expédition.

Tampon de stockage:
PBS avec azoture de sodium à 0,02 % et glycérol à 50 % pH 7,3
L'aliquotage n'est pas nécessaire pour le stockage à -20C

*** Les 20ul contiennent 0,1% de BSA.

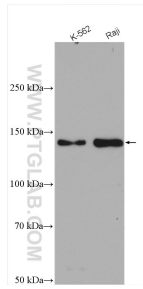
For technical support and original validation data for this product please contact:

T: 1 (888) 4PTGLAB (1-888-478-4522) (toll free in USA), or 1(312) 455-8498 (outside USA)

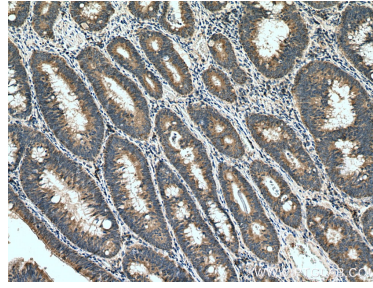
E: proteintech@ptglab.com
W: ptglab.com

This product is exclusively available under Proteintech Group brand and is not available to purchase from any other manufacturer.

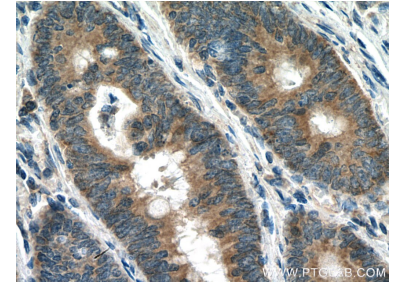
Données de validation sélectionnées



Various lysates were subjected to SDS PAGE followed by western blot with 28483-1-AP (CARD11 antibody) at dilution of 1:4000 incubated at room temperature for 1.5 hours.



Immunohistochemical analysis of paraffin-embedded human colon cancer tissue slide using 28483-1-AP (CARD11 antibody) at dilution of 1:200 (under 10x lens). Heat mediated antigen retrieval with Tris-EDTA buffer (pH 9.0).



Immunohistochemical analysis of paraffin-embedded human colon cancer tissue slide using 28483-1-AP (CARD11 antibody) at dilution of 1:200 (under 40x lens). Heat mediated antigen retrieval with Tris-EDTA buffer (pH 9.0).