

À des fins de recherche uniquement

# Anticorps Polyclonal de lapin anti-FLNC



Numéro de catalogue: 28492-1-AP

## Informations de base

<b>Numéro de catalogue:</b> 28492-1-AP	<b>Numéro d'acquisition GenBank:</b> NM_001458	<b>Méthode de purification:</b> Purification par affinité contre l'antigène
<b>Taille:</b> 150ul , Concentration: 300 µg/ml by Nanodrop;	<b>Identification du gène (NCBI):</b> 2318	<b>Dilutions recommandées:</b> WB 1:500-1:2000
<b>Hôte:</b> Lapin	<b>Nom complet:</b> filamin C, gamma (actin binding protein 280)	
<b>Isotype:</b> IgG	<b>MW calculé</b> 291 kDa	
<b>Immunogen Catalog Number:</b> AG29328	<b>MW observés:</b> 280-300 kDa	

## Applications

<b>Applications testées:</b> WB, ELISA	<b>Contrôles positifs:</b> WB : cellules SGC-7901,
<b>Spécificité de l'espèce:</b> Humain	

## Informations générales

Filamin C (FLNC; also known as  $\gamma$ -FLN; ABP-L; FLN2), a muscle-specific filamin and a large actin-cross-linking protein. Human filamins are ~280 kDa homodimers, each monomer consisting of an N-terminal actin-binding domain followed by 24 immunoglobulin (Ig)-like domains (d1 to d24), the last of which mediates dimerization. FLNC is specifically expressed in cardiomyocytes and skeletal myocytes and is involved in the maintenance of structural integrity. High filamin C associated with better prognosis of prostate cancer, leukemia and breast cancer patients. ( PMID: 25577646, PMID: 30867563, PMID: 31131323)

## Stockage

**Stockage:**  
Stocker à -20°C. Stable pendant un an après l'expédition.  
**Tampon de stockage:**  
PBS avec azoture de sodium à 0,02 % et glycérol à 50 % pH 7,3  
L'aliquotage n'est pas nécessaire pour le stockage à -20C

\*\*\* Les 20ul contiennent 0,1% de BSA.

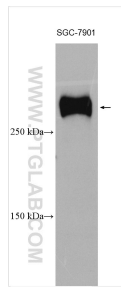
For technical support and original validation data for this product please contact:

T: 1 (888) 4PTGLAB (1-888-478-4522) (toll free in USA), or 1(312) 455-8498 (outside USA)

E: [proteintech@ptglab.com](mailto:proteintech@ptglab.com)  
W: [ptglab.com](http://ptglab.com)

This product is exclusively available under Proteintech Group brand and is not available to purchase from any other manufacturer.

## Données de validation sélectionnées



SGC-7901 cells were subjected to SDS PAGE followed by western blot with 28492-1-AP (filamin-c antibody) at dilution of 1:1000 incubated at room temperature for 1.5 hours.