

À des fins de recherche uniquement

Anticorps Polyclonal de lapin anti-MTMR14



Numéro de catalogue: 28496-1-AP

Informations de base

Numéro de catalogue: 28496-1-AP	Numéro d'acquisition GenBank: BC050626	Méthode de purification: Purification par affinité contre l'antigène
Taille: 150ul , Concentration: 600 µg/ml by Nanodrop;	Identification du gène (NCBI): 64419	Dilutions recommandées: WB 1:500-1:3000
Hôte: Lapin	Nom complet: myotubularin related protein 14	
Isotype: IgG	MW calculé 72 kDa	
Immunogen Catalog Number: AG29627	MW observés: 60-72 kDa	

Applications

Applications testées: WB, ELISA	Contrôles positifs: WB : cellules MCF-7, cellules Neuro-2a
Spécificité de l'espèce: Humain, souris	

Informations générales

MTMR14, also known as Jumpy, belongs to the MTM1/MTMRs family which has 15 members that divided into two subgroup: catalytically inactive and active. MTMR14 is a catalytically active member possessing an active phosphatase domain, that specifically dephosphorylates PI3P and phosphatidylinositol (3,5)-bisphosphate (PI3,5P2) at position 3 on inositol ring. A remarkable feature of the MTM1/MTMRs family is the association between a catalytically inactive member and a catalytically active member, which plays an important regulatory role. MTMR14 has 3 isoforms with molecular weight of 60-72 kDa, and also can be detected as a higher molecular weight due to the heterodimerization with other MTMR members.

Stockage

Stockage:
Stocker à -20°C. Stable pendant un an après l'expédition.
Tampon de stockage:
PBS avec azoture de sodium à 0,02 % et glycérol à 50 % pH 7,3
L'aliquotage n'est pas nécessaire pour le stockage à -20C

***** Les 20ul contiennent 0,1% de BSA.**

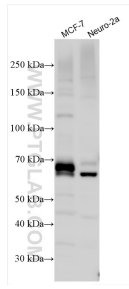
For technical support and original validation data for this product please contact:

T: 1 (888) 4PTGLAB (1-888-478-4522) (toll free in USA), or 1(312) 455-8498 (outside USA)

E: proteintech@ptglab.com
W: ptglab.com

This product is exclusively available under Proteintech Group brand and is not available to purchase from any other manufacturer.

Données de validation sélectionnées



Various lysates were subjected to SDS PAGE followed by western blot with 28496-1-AP (MTMR14 antibody) at dilution of 1:1500 incubated at room temperature for 1.5 hours.