

À des fins de recherche uniquement

Anticorps Polyclonal de lapin anti-ROS1



Numéro de catalogue: 28500-1-AP **Phare**

Informations de base

Numéro de catalogue: 28500-1-AP	Numéro d'acquisition GenBank: NM_002944	Méthode de purification: Purification par affinité contre l'antigène
Taille: 150ul , Concentration: 350 µg/ml by Nanodrop;	Identification du gène (NCBI): 6098	Dilutions recommandées: WB 1:500-1:2000
Hôte: Lapin	Nom complet: c-ros oncogene 1 , receptor tyrosine kinase	
Isotype: IgG	MW calculé 264 kDa	
Immunogen Catalog Number: AG28943	MW observés: 250 kDa	

Applications

Applications testées: WB, ELISA	Contrôles positifs: WB : cellules HeLa,
Spécificité de l'espèce: Humain	

Informations générales

ROS1, an orphan receptor tyrosine kinase of the insulin receptor family, was initially identified as a homolog of v-ros from the UR2 sarcoma virus (PMID: 3023956). Investigators have found that rearrangements of the ROS1 gene occur in many cancers. The first oncogenic fusion of ROS1, FIG-ROS1, was initially identified by research studies in glioblastoma (PMID: 12661006), and subsequent studies have found this fusion in cholangiocarcinoma, ovarian cancer and non-small cell lung cancer (NSCLC) (PMID: 21253578, 22163003, 22661537). Additional oncogenic ROS1 fusion proteins have been found in NSCLC (at a frequency of 1-2%), including FIG, CD74, SLC34A2 and SDC4, and the list is growing. CD74-ROS1 is the most frequently detected ROS1 fusion in this group of patients. With all of the known fusion genes, the ROS1 kinase domain is fully retained and the ROS1 junction point at the messenger RNA (mRNA) level invariably occurs at the 5' end of exons 32, 34, 35 or 36 (PMID: 27535289). The molecular mass of some ROS1 fusion proteins are detected as follows: FIG-ROS1 (110 kDa), SLC34A2-ROS1 (85/70/59 kDa), CD74-ROS1 (80 kDa), and SDC4-ROS1 (75 kDa). (PMID: 22661537, 22659450)

Stockage

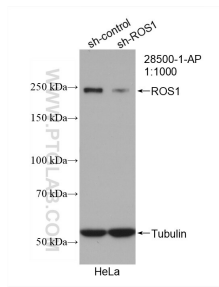
Stockage:
Stocker à -20°C. Stable pendant un an après l'expédition.
Tampon de stockage:
PBS avec azoture de sodium à 0,02 % et glycérol à 50 % pH 7,3
L'aliquotage n'est pas nécessaire pour le stockage à -20C

***** Les 20ul contiennent 0,1% de BSA.**

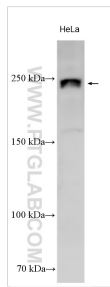
For technical support and original validation data for this product please contact:
T: 1 (888) 4PTGLAB (1-888-478-4522) (toll free in USA), or 1(312) 455-8498 (outside USA)
E: proteintech@ptglab.com
W: ptglab.com

This product is exclusively available under Proteintech Group brand and is not available to purchase from any other manufacturer.

Données de validation sélectionnées



WB result of ROS1 antibody (28500-1-AP; 1:1000; incubated at room temperature for 1.5 hours) with sh-Control and sh-ROS1 transfected HeLa cells.



HeLa lysates were subjected to SDS PAGE followed by western blot with 28500-1-AP (ROS1 antibody) at dilution of 1:1000 incubated at room temperature for 1.5 hours.