

À des fins de recherche uniquement

# Anticorps Polyclonal de lapin anti-Alpha-2-antiplasmin



Numéro de catalogue: 28549-1-AP

## Informations de base

<b>Numéro de catalogue:</b> 28549-1-AP	<b>Numéro d'acquisition GenBank:</b> BC031592	<b>Méthode de purification:</b> Purification par affinité contre l'antigène
<b>Taille:</b> 150ul , Concentration: 600 µg/ml by Nanodrop;	<b>Identification du gène (NCBI):</b> 5345	<b>Dilutions recommandées:</b> WB 1:1000-1:4000 IHC 1:50-1:500 IF 1:50-1:500
<b>Hôte:</b> Lapin	<b>Nom complet:</b> serpin peptidase inhibitor, clade F (alpha-2 antiplasmin, pigment epithelium derived factor), member 2	
<b>Isotype:</b> IgG	<b>MW calculé</b> 491 aa, 55 kDa	
<b>Immunogen Catalog Number:</b> AG29670	<b>MW observés:</b> 55 kDa	

## Applications

### Applications testées:

IF, IHC, WB, ELISA

### Spécificité de l'espèce:

Humain, rat, souris

**Remarque-IHC: il est suggéré de démasquer l'antigène avec un tampon de TE buffer pH 9.0; (\*) À défaut, 'le démasquage de l'antigène peut être effectué avec un tampon citrate pH 6,0.**

### Contrôles positifs:

WB : cellules HepG2, cellules THP-1, tissu hépatique de rat, tissu hépatique de souris

IHC : tissu hépatique de souris,

IF : cellules HepG2,

## Informations générales

SERPINF2, also termed Alpha-2-antiplasmin(a2-AP), a member of the serpin family of serine protease inhibitors. SERPINF2 is a major inhibitor of plasmin, which degrades fibrin and various other proteins. Consequently, the proper function of this gene has a major role in regulating the blood clotting pathway. Mutations in SERPINF2 result in alpha-2-plasmin inhibitor deficiency, which is characterized by severe hemorrhagic diathesis.

## Stockage

### Stockage:

Stocker à -20°C. Stable pendant un an après l'expédition.

### Tampon de stockage:

PBS avec azoture de sodium à 0,02 % et glycérol à 50 % pH 7,3

L'aliquotage n'est pas nécessaire pour le stockage à -20C

\*\*\* Les 20ul contiennent 0,1% de BSA.

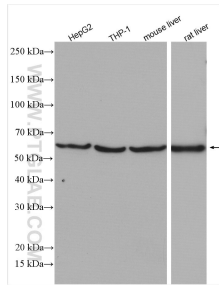
For technical support and original validation data for this product please contact:

T: 1 (888) 4PTGLAB (1-888-478-4522) (toll free in USA), or 1(312) 455-8498 (outside USA)

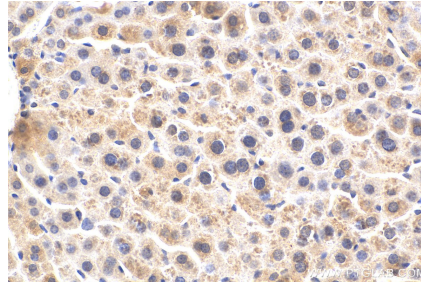
E: [proteintech@ptglab.com](mailto:proteintech@ptglab.com)  
W: [ptglab.com](http://ptglab.com)

This product is exclusively available under Proteintech Group brand and is not available to purchase from any other manufacturer.

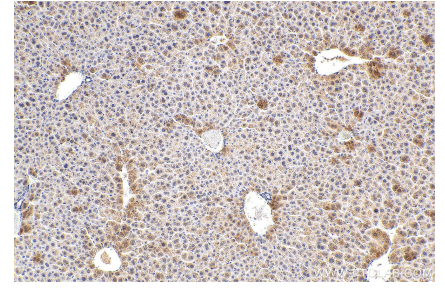
## Données de validation sélectionnées



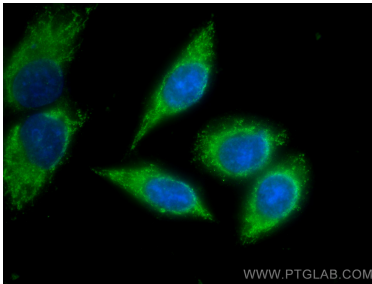
Various lysates were subjected to SDS PAGE followed by western blot with 28549-1-AP (Alpha-2-antiplasmin antibody) at dilution of 1:2000 incubated at room temperature for 1.5 hours.



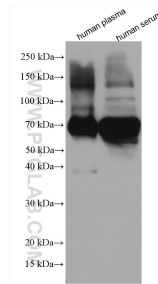
Immunohistochemical analysis of paraffin-embedded mouse liver tissue slide using 28549-1-AP (Alpha-2-antiplasmin antibody) at dilution of 1:200 (under 40x lens). Heat mediated antigen retrieval with Tris-EDTA buffer (pH 9.0).



Immunohistochemical analysis of paraffin-embedded mouse liver tissue slide using 28549-1-AP (Alpha-2-antiplasmin antibody) at dilution of 1:200 (under 10x lens). Heat mediated antigen retrieval with Tris-EDTA buffer (pH 9.0).



Immunofluorescent analysis of (-20°C Ethanol) fixed HepG2 cells using Alpha-2-antiplasmin antibody (28549-1-AP) at dilution of 1:200 and CoraLite®488-Conjugated AffiniPure Goat Anti-Rabbit IgG(H+L).



human plasma were subjected to SDS PAGE followed by western blot with 28549-1-AP (Alpha-2-antiplasmin antibody) at dilution of 1:2000 incubated at room temperature for 1.5 hours.