

À des fins de recherche uniquement

# Anticorps Polyclonal de lapin anti-CENPF



Numéro de catalogue: 28568-1-AP

Phare

1 Publications

## Informations de base

|  |   |   |
|--|---|---|
| Numéro de catalogue:<br>28568-1-AP                       | Numéro d'acquisition GenBank:<br>NM_016343                | Méthode de purification:<br>Purification par affinité contre l'antigène         |
| Taille:<br>150ul , Concentration: 700 µg/ml by Nanodrop; | Identification du gène (NCBI):<br>1063                    | Dilutions recommandées:<br>WB 1:1000-1:6000<br>IHC 1:50-1:500<br>IF 1:200-1:800 |
| Hôte:<br>Lapin   | Nom complet:<br>centromere protein F, 350/400ka (mitosin) |   |
| Isotype:<br>IgG  | MW calculé:<br>368 kDa                                    |   |
| Immunogen Catalog Number:<br>AG29665                     | MW observés:<br>350 kDa                                   |   |

## Applications

### Applications testées:

IF, IHC, WB, ELISA

### Demandes citées:

IHC, WB

### Spécificité de l'espèce:

Humain

### Espèces citées:

Humain

### Contrôles positifs:

WB : cellules HeLa, cellules HepG2

IHC : tissu de cancer du poumon humain, tissu hépatique de souris, tissu rénal de souris

IF : cellules HeLa,

**Remarque-IHC: il est suggéré de démasquer l'antigène avec un tampon de TE buffer pH 9,0; (\*) À défaut, 'le démasquage de l'antigène peut être 'effectué avec un tampon citrate pH 6,0.**

## Informations générales

CENPF, also named as mitosin and centromere protein F (PMID: 22912832), belongs to centromere protein F family. During the cell cycle, CENPF localizes in multiple cellular structures including the nuclear envelope in late G2/early prophase and kinetochores throughout mitosis (PMID: 30198378). CENPF is required for kinetochore function and chromosome segregation in mitosis and required for kinetochore localization of dynein, LIS1, NDE1 and NDEL1 (PMID: 17600710)(PMID: 7542657). It regulates recycling of the plasma membrane by acting as a link between recycling vesicles and the microtubule network through its association with STX4 and SNAP25. Acts as a potential inhibitor of pocket protein-mediated cellular processes during development by regulating the activity of RB proteins during cell division and proliferation (PMID: 26125848). The calculated molecular weight of CENPF is ~358 kDa and CENPF can be detected as ~367 kDa (PMID: 7542657).

## Publications notables

| Autrice  | Pubmed ID | Journal            | Application |
|----------|-----------|--------------------|-------------|
| Ji Zhang | 36915885  | Transl Androl Urol | WB,IHC      |

## Stockage

### Stockage:

Stocker à -20°C. Stable pendant un an après l'expédition.

### Tampon de stockage:

PBS avec azoture de sodium à 0,02 % et glycérol à 50 % pH 7,3

L'aliquotage n'est pas nécessaire pour le stockage à -20C

\*\*\* Les 20ul contiennent 0,1% de BSA.

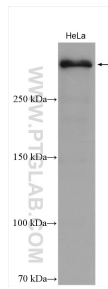
For technical support and original validation data for this product please contact:

T: 1 (888) 4PTGLAB (1-888-478-4522) (toll free in USA), or 1(312) 455-8498 (outside USA)

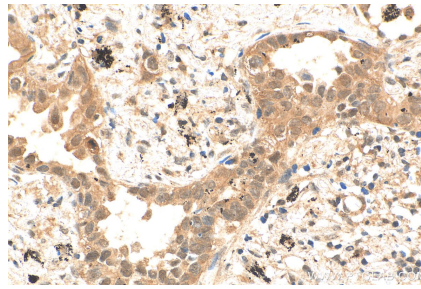
E: proteintech@ptglab.com  
W: ptglab.com

This product is exclusively available under Proteintech Group brand and is not available to purchase from any other manufacturer.

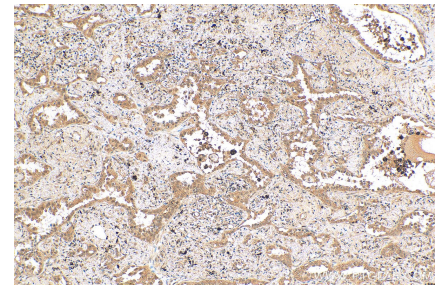
## Données de validation sélectionnées



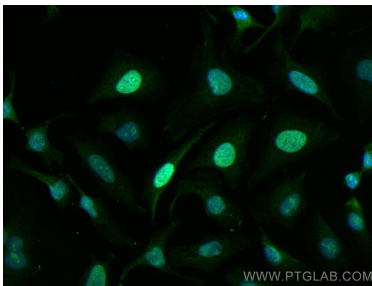
HeLa cells were subjected to SDS PAGE followed by western blot with 28568-1-AP (CENPF antibody) at dilution of 1:3000 incubated at room temperature for 1.5 hours.



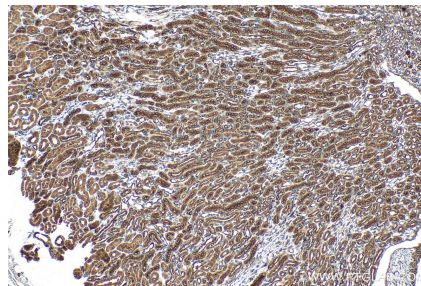
Immunohistochemical analysis of paraffin-embedded human lung cancer tissue slide using 28568-1-AP (CENPF antibody) at dilution of 1:200 (under 40x lens). Heat mediated antigen retrieval with Tris-EDTA buffer (pH 9.0).



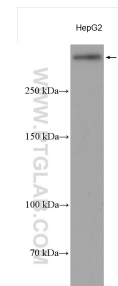
Immunohistochemical analysis of paraffin-embedded human lung cancer tissue slide using 28568-1-AP (CENPF antibody) at dilution of 1:200 (under 10x lens). Heat mediated antigen retrieval with Tris-EDTA buffer (pH 9.0).



Immunofluorescent analysis of (4% PFA) fixed HeLa cells using CENPF antibody (28568-1-AP) at dilution of 1:400 and CoraLite®488-Conjugated AffiniPure Goat Anti-Rabbit IgG(H+L).



Immunohistochemical analysis of paraffin-embedded mouse kidney tissue slide using 28568-1-AP (CENPF antibody) at dilution of 1:200 (under 10x lens). Heat mediated antigen retrieval with Tris-EDTA buffer (pH 9.0).



HepG2 cells were subjected to SDS PAGE followed by western blot with 28568-1-AP (CENPF antibody) at dilution of 1:3000 incubated at room temperature for 1.5 hours.