

À des fins de recherche uniquement

Anticorps Polyclonal de lapin anti-PDE6D



Numéro de catalogue: 28573-1-AP

Informations de base

Numéro de catalogue: 28573-1-AP	Numéro d'acquisition GenBank: NM_002601	Méthode de purification: Purification par affinité contre l'antigène
Taille: 150ul, Concentration: 500 µg/ml by Nanodrop and 300 µg/ml by Bradford method using BSA as the standard;	Identification du gène (NCBI): 5147	Dilutions recommandées: WB 1:1000-1:5000
Hôte: Lapin	Nom complet: phosphodiesterase 6D, cGMP-specific, rod, delta	
Isotype: IgG	MW calculé: 17 KDa	
Immunogen Catalog Number: AG29563	MW observés: 14-17 kDa	

Applications

Applications testées: WB, ELISA	Contrôles positifs: WB : cellules HeLa, cellules HepG2, tissu cérébral de rat, tissu cérébral de souris, tissu placentaire humain
Spécificité de l'espèce: Humain, rat, souris	

Informations générales

PDE6D, also known as PDED, belongs to the PDE6D/unc-119 family. PDE6D is a ubiquitously expressed prenyl-binding protein. By binding to prenyl moieties, PDE6D mediates the shuttling of prenylated proteins between membranes. Thereby, it regulates the membrane association of Ras and Rap GTPases (PMID: 36672247). In addition, research has shown that PDE6D is overexpressed in liver cancer and correlated with tumor stages, grading, and ERK activation (PMID: 30901922). The calculated molecular weight of PDE6D is 17 kDa.

Stockage

Stockage:
Stocker à -20°C. Stable pendant un an après l'expédition.
Tampon de stockage:
PBS avec azoture de sodium à 0,02 % et glycérol à 50 % pH 7,3
L'aliquotage n'est pas nécessaire pour le stockage à -20C

***** Les 20ul contiennent 0,1% de BSA.**

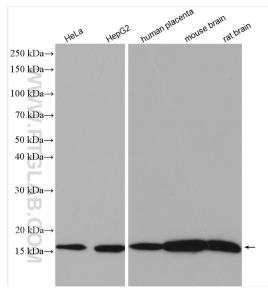
For technical support and original validation data for this product please contact:

T: 1 (888) 4PTGLAB (1-888-478-4522) (toll free in USA), or 1(312) 455-8498 (outside USA)

E: proteintech@ptglab.com
W: ptglab.com

This product is exclusively available under Proteintech Group brand and is not available to purchase from any other manufacturer.

Données de validation sélectionnées



Various lysates were subjected to SDS PAGE followed by western blot with 28573-1-AP (PDE6D antibody) at dilution of 1:2500 incubated at room temperature for 1.5 hours.