

À des fins de recherche uniquement

# Anticorps Polyclonal de lapin anti-Siglec-15



Numéro de catalogue: 28594-1-AP

## Informations de base

Numéro de catalogue: 28594-1-AP	Numéro d'acquisition GenBank: NM_213602	Méthode de purification: Purification par affinité contre l'antigène
Taille: 150ul, Concentration: 700 µg/ml by Nanodrop;	Identification du gène (NCBI): 284266	Dilutions recommandées: WB 1:1000-1:5000
Hôte: Lapin	Nom complet: sialic acid binding Ig-like lectin 15	
Isotype: IgG	MW calculé: 36 kDa	
Immunogen Catalog Number: AG29829	MW observés: 38-40 kDa	

## Applications

Applications testées: WB, ELISA	Contrôles positifs: WB : cellules PC-3, cellules MG U-87
Spécificité de l'espèce: Humain	

## Informations générales

Sialic acid binding Ig-like lectin 15 (Siglec-15) is a member of the Siglec family of glycan-recognition proteins. Siglec-15 is a type-I transmembrane protein consisting of two immunoglobulin (Ig)-like domains, a transmembrane domain, and a short cytoplasmic tail (PMID: 17483134). It is mainly expressed on a subset of myeloid lineage cells and can be upregulated in many cancers (PMID: 32939323). Siglec-15 has been reported as an immune suppressor and a potential target for normalization cancer immunotherapy (PMID: 30833750). Siglec-15 has a calculated molecular weight of 36 kDa. It has been detected at 38-40 kDa due to glycosylation (PMID: 32921411).

## Stockage

**Stockage:**  
Stocker à -20°C. Stable pendant un an après l'expédition.  
**Tampon de stockage:**  
PBS avec azoture de sodium à 0,02 % et glycérol à 50 % pH 7,3  
L'aliquotage n'est pas nécessaire pour le stockage à -20C

\*\*\* Les 20ul contiennent 0,1% de BSA.

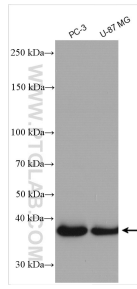
For technical support and original validation data for this product please contact:

T: 1 (888) 4PTGLAB (1-888-478-4522) (toll free in USA), or 1(312) 455-8498 (outside USA)

E: [proteintech@ptglab.com](mailto:proteintech@ptglab.com)  
W: [ptglab.com](http://ptglab.com)

This product is exclusively available under Proteintech Group brand and is not available to purchase from any other manufacturer.

## Données de validation sélectionnées



Various lysates were subjected to SDS PAGE followed by western blot with 28594-1-AP (Siglec-15 antibody) at dilution of 1:2500 incubated at room temperature for 1.5 hours.