

À des fins de recherche uniquement

Anticorps Polyclonal de lapin anti-CLEC12A



Numéro de catalogue: 28627-1-AP

Informations de base

| | | |
|--|---|--|
| Numéro de catalogue: 28627-1-AP | Numéro d'acquisition GenBank: BC063424 | Méthode de purification: Purification par affinité contre l'antigène |
| Taille: 150ul, Concentration: 550 µg/ml by Nanodrop; | Identification du gène (NCBI): 160364 | Dilutions recommandées: WB 1:500-1:2000 |
| Hôte: Lapin | Nom complet: C-type lectin domain family 12, member A | |
| Isotype: IgG | MW calculé 31 kDa | |
| Immunogen Catalog Number: AG27864 | MW observés: 55-75 kDa | |

Applications

| | |
|---|--|
| Applications testées: WB, ELISA | Contrôles positifs: WB : cellules U-937, leucocyte de sang périphérique humain |
| Spécificité de l'espèce: Humain | |

Informations générales

CLEC12A, also known as CD371, M1CL, DCAL-2 or CLL-1, is a type II transmembrane glycoprotein and a member of the C-type lectin superfamily (PMID: 30401586). This protein, which contains a single C-type lectin-like domain and a cytoplasmic immunoreceptor tyrosine-based inhibitory motif (ITIM), is related to LOX-1 and Dectin-1 and is variably spliced and highly N-glycosylated (PMID: 14739280). Its ITIM sequence recruits the tyrosine phosphatases SHP-1 and SHP-2 to negatively regulate Syk signaling. In humans, CLEC12A is mainly expressed on myeloid cells, being found on monocytes, granulocytes, macrophages and DC subsets, and at lower levels on CD4+ T cells (PMID: 32477350). The observed molecular weight of CLEC12A is between 40 and 75 kDa, which is much higher than the predicted molecular weight due to glycosylation (PMID: 14739280).

Stockage

Stockage:
Stocker à -20°C. Stable pendant un an après l'expédition.
Tampon de stockage:
PBS avec azoture de sodium à 0,02 % et glycérol à 50 % pH 7,3
L'aliquotage n'est pas nécessaire pour le stockage à -20C

*** Les 20ul contiennent 0,1% de BSA.

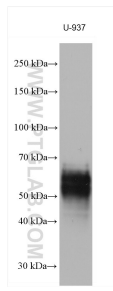
For technical support and original validation data for this product please contact:

T: 1 (888) 4PTGLAB (1-888-478-4522) (toll free in USA), or 1(312) 455-8498 (outside USA)

E: proteintech@ptglab.com
W: ptglab.com

This product is exclusively available under Proteintech Group brand and is not available to purchase from any other manufacturer.

Données de validation sélectionnées



U-937 cells were subjected to SDS PAGE followed by western blot with 28627-1-AP (CLEC12A antibody) at dilution of 1:1000 incubated at room temperature for 1.5 hours.