

À des fins de recherche uniquement

# Anticorps Polyclonal de lapin anti-SLC38A1



Numéro de catalogue: 28632-1-AP **Phare**

## Informations de base

<b>Numéro de catalogue:</b> 28632-1-AP	<b>Numéro d'acquisition GenBank:</b> BC010620	<b>Méthode de purification:</b> Purification par affinité contre l'antigène
<b>Taille:</b> 150ul , Concentration: 500 µg/ml by Nanodrop;	<b>Identification du gène (NCBI):</b> 81539	<b>Dilutions recommandées:</b> WB 1:2000-1:14000 IHC 1:50-1:500
<b>Hôte:</b> Lapin	<b>Nom complet:</b> solute carrier family 38, member 1	
<b>Isotype:</b> IgG	<b>MW calculé:</b> 487 aa, 54 kDa	
<b>Immunogen Catalog Number:</b> AG30088	<b>MW observés:</b> 54 kDa, 60-70 kDa	

## Applications

### Applications testées:

IHC, WB, ELISA

### Spécificité de l'espèce:

Humain, souris

**Remarque-IHC: il est suggéré de démasquer l'antigène avec un tampon de TE buffer pH 9,0; (\*) À défaut, 'le démasquage de l'antigène peut être effectué avec un tampon citrate pH 6,0.**

### Contrôles positifs:

WB : cellules A549, tissu cérébral de souris, tissu de muscle squelettique de souris

IHC : tissu cérébral de souris,

## Informations générales

SLC38A1 (Sodium-coupled neutral amino acid transporter 1), is also named as SNAT1, which is a symporter that cotransports short-chain neutral amino acids and sodium ions from the extracellular to the intracellular side of the cell membrane (PMID:20599747, PMID:10891391). Inhibition of SLC38A1 reduced tumor growth, cellular migration, invasion, and induced senescence in melanoma cells (PMID:35565278). SLC38A1 was identified as a positive regulator of mTORC1 in neurons, which promoted ischemic brain damage by mTOR-autophagy system (PMID:31552299). SLC38A1 is mainly expressed in brain and placenta.

## Stockage

### Stockage:

Stocker à -20°C. Stable pendant un an après l'expédition.

### Tampon de stockage:

PBS avec azoture de sodium à 0,02 % et glycérol à 50 % pH 7,3

L'aliquotage n'est pas nécessaire pour le stockage à -20C

\*\*\* Les 20ul contiennent 0,1% de BSA.

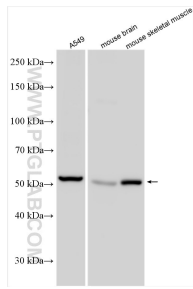
For technical support and original validation data for this product please contact:

T: 1 (888) 4PTGLAB (1-888-478-4522) (toll free in USA), or 1(312) 455-8498 (outside USA)

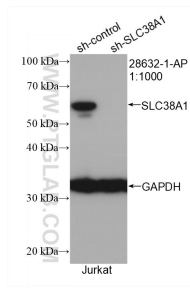
E: proteintech@ptglab.com  
W: ptglab.com

This product is exclusively available under Proteintech Group brand and is not available to purchase from any other manufacturer.

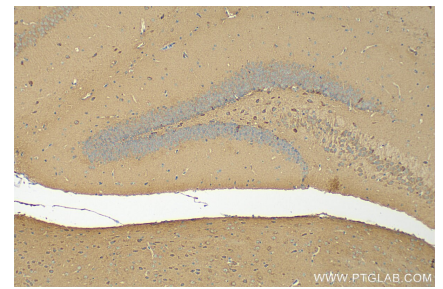
## Données de validation sélectionnées



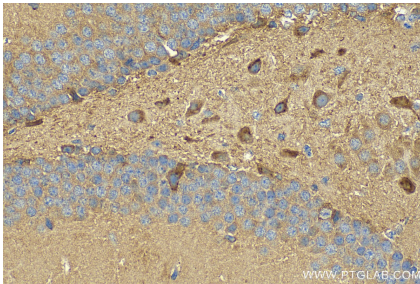
Various lysates were subjected to SDS PAGE followed by western blot with 28632-1-AP (SLC38A1 antibody) at dilution of 1:7000 incubated at room temperature for 1.5 hours.



WB result of SLC38A1 antibody (28632-1-AP; 1:1000; incubated at room temperature for 1.5 hours) with sh-Control and sh-SLC38A1 transfected Jurkat cells.



Immunohistochemical analysis of paraffin-embedded mouse brain tissue slide using 28632-1-AP (SLC38A1 antibody) at dilution of 1:200 (under 10x lens). Heat mediated antigen retrieval with Tris-EDTA buffer (pH 9.0).



Immunohistochemical analysis of paraffin-embedded mouse brain tissue slide using 28632-1-AP (SLC38A1 antibody) at dilution of 1:200 (under 40x lens). Heat mediated antigen retrieval with Tris-EDTA buffer (pH 9.0).