

À des fins de recherche uniquement

# Anticorps Polyclonal de lapin anti-RFC5



Numéro de catalogue: 28671-1-AP

## Informations de base

<b>Numéro de catalogue:</b> 28671-1-AP	<b>Numéro d'acquisition GenBank:</b> BC001866	<b>Méthode de purification:</b> Purification par affinité contre l'antigène
<b>Taille:</b> 150ul , Concentration: 400 µg/ml by Nanodrop;	<b>Identification du gène (NCBI):</b> 5985	<b>Dilutions recommandées:</b> WB 1:500-1:3000 IF 1:50-1:500
<b>Hôte:</b> Lapin	<b>Nom complet:</b> replication factor C (activator 1) 5, 36.5kDa	
<b>Isotype:</b> IgG	<b>MW calculé</b> 36 aa, 5 kDa	
<b>Immunogen Catalog Number:</b> AG29236		

## Applications

<b>Applications testées:</b> IF, WB, ELISA	<b>Contrôles positifs:</b>
<b>Spécificité de l'espèce:</b> Humain	<b>WB :</b> cellules HCT 116, cellules HEK-293T, cellules U-251 <b>IF :</b> cellules HeLa,

## Informations générales

Replication factor C subunit 5 (RFC5), also known as activator 1, can recruit proliferating cell nuclear antigen(PCNA) onto the DNA polymerase S-phase checkpoint complex. In eukaryotes, RFC5 is involved in repairing mismatches, DNA double helix damage, nucleotide excision, and regulating the cell cycle(PMID: 30210909). RFC5 is significantly upregulated in cancer tissues or cells, and its expression is elevated with the cancer progression(PMID: 30214556).

## Stockage

**Stockage:**  
Stocker à -20°C. Stable pendant un an après l'expédition.  
**Tampon de stockage:**  
PBS avec azoture de sodium à 0,02 % et glycérol à 50 % pH 7,3  
L'aliquotage n'est pas nécessaire pour le stockage à -20C

\*\*\* Les 20ul contiennent 0,1% de BSA.

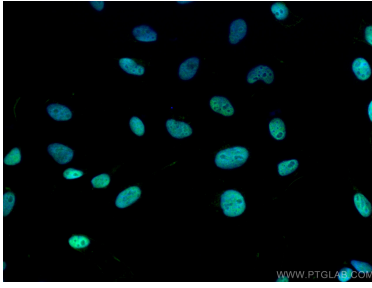
For technical support and original validation data for this product please contact:

T: 1 (888) 4PTGLAB (1-888-478-4522) (toll free in USA), or 1(312) 455-8498 (outside USA)

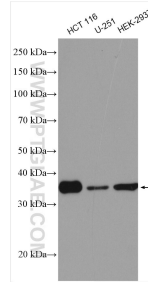
E: [proteintech@ptglab.com](mailto:proteintech@ptglab.com)  
W: [ptglab.com](http://ptglab.com)

This product is exclusively available under Proteintech Group brand and is not available to purchase from any other manufacturer.

## Données de validation sélectionnées



Immunofluorescent analysis of (4% PFA) fixed HeLa cells using RFC5 antibody (28671-1-AP) at dilution of 1:200 and CoraLite®488-Conjugated AffiniPure Goat Anti-Rabbit IgG(H+L).



Various lysates were subjected to SDS PAGE followed by western blot with 28671-1-AP (RFC5 antibody) at dilution of 1:1500 incubated at room temperature for 1.5 hours.