

À des fins de recherche uniquement

# Anticorps Polyclonal de lapin anti-WWP1



Numéro de catalogue: 28689-1-AP

## Informations de base

<b>Numéro de catalogue:</b> 28689-1-AP	<b>Numéro d'acquisition GenBank:</b> BC036065	<b>Méthode de purification:</b> Purification par affinité contre l'antigène
<b>Taille:</b> 150ul, Concentration: 400 µg/ml by Nanodrop and 267 µg/ml by Bradford method using BSA as the standard;	<b>Identification du gène (NCBI):</b> 11059	<b>Dilutions recommandées:</b> WB 1:500-1:1000 IHC 1:50-1:500
<b>Hôte:</b> Lapin	<b>Nom complet:</b> WW domain containing E3 ubiquitin protein ligase 1	
<b>Isotype:</b> IgG	<b>MW calculé:</b> 922 aa, 105 kDa	
<b>Immunogen Catalog Number:</b> AG30161	<b>MW observés:</b> 95-105 kDa	

## Applications

<b>Applications testées:</b> IHC, WB, ELISA	<b>Contrôles positifs:</b>
<b>Spécificité de l'espèce:</b> Humain	<b>WB:</b> cellules HepG2, cellules A431, cellules HeLa, cellules MCF-7
<b>Remarque-IHC:</b> <i>il est suggéré de démasquer l'antigène avec un tampon de TE buffer pH 9.0; (*) À défaut, le démasquage de l'antigène peut être effectué avec un tampon citrate pH 6,0.</i>	<b>IHC:</b> tissu de cancer du sein humain, tissu de cancer du foie humain

## Informations générales

WW domain-containing E3 ubiquitin protein ligase 1 (WWP1) is a multifunction protein containing an N-terminal C2 domain, four tandem WW domains for substrate binding, and a C-terminal catalytic HECT domain for ubiquitin transferring. It is also named as AIP5, Tiul1. WWP1 regulates a variety of cellular biological processes including protein trafficking and degradation, signaling, transcription, and viral budding. WWP1 has been implicated in several diseases, such as cancers, infectious diseases, neurological diseases, and aging (PMID:22051607). It has 6 isoforms produced by alternative splicing.

## Stockage

**Stockage:**  
Stocker à -20°C. Stable pendant un an après l'expédition.  
**Tampon de stockage:**  
PBS avec azoture de sodium à 0,02 % et glycérol à 50 % pH 7,3  
L'aliquotage n'est pas nécessaire pour le stockage à -20C

\*\*\* Les 20ul contiennent 0,1% de BSA.

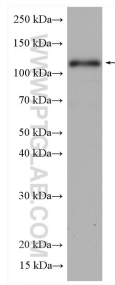
For technical support and original validation data for this product please contact:

T: 1 (888) 4PTGLAB (1-888-478-4522) (toll free in USA), or 1(312) 455-8498 (outside USA)

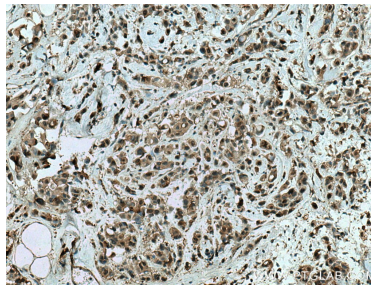
E: proteintech@ptglab.com  
W: ptglab.com

This product is exclusively available under Proteintech Group brand and is not available to purchase from any other manufacturer.

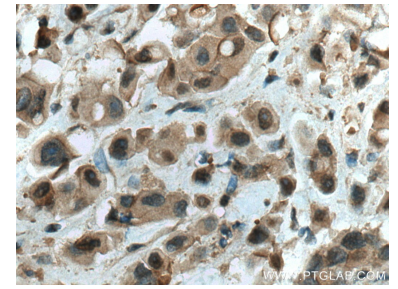
## Données de validation sélectionnées



HepG2 cells were subjected to SDS PAGE followed by western blot with 28689-1-AP (WWP1 antibody) at dilution of 1:800 incubated at room temperature for 1.5 hours.



Immunohistochemical analysis of paraffin-embedded human breast cancer tissue slide using 28689-1-AP (WWP1 antibody) at dilution of 1:200 (under 10x lens). Heat mediated antigen retrieval with Tris-EDTA buffer (pH 9.0).



Immunohistochemical analysis of paraffin-embedded human breast cancer tissue slide using 28689-1-AP (WWP1 antibody) at dilution of 1:200 (under 40x lens). Heat mediated antigen retrieval with Tris-EDTA buffer (pH 9.0).