

À des fins de recherche uniquement

Anticorps Polyclonal de lapin anti-KNL1



Numéro de catalogue: 28695-1-AP

Informations de base

Numéro de catalogue: 28695-1-AP	Numéro d'acquisition GenBank: NM_170589	Méthode de purification: Purification par affinité contre l'antigène
Taille: 150ul , Concentration: 450 µg/ml by Nanodrop;	Identification du gène (NCBI): 57082	Dilutions recommandées: WB 1:1000-1:8000
Hôte: Lapin	Nom complet: cancer susceptibility candidate 5	
Isotype: IgG	MW calculé: 265 kDa	
Immunogen Catalog Number: AG29881	MW observés: 300 kDa	

Applications

Applications testées: WB, ELISA	Contrôles positifs: WB : cellules HEK-293, cellules HeLa
Spécificité de l'espèce: Humain	

Informations générales

KNL1 is a component of the multiprotein assembly that is required for creation of kinetochore-microtubule attachments and chromosome segregation. KNL1 functions as a scaffold for proteins that influence the spindle assembly checkpoint during the eukaryotic cell cycle and it interacts with at least five different kinetochore proteins and two checkpoint kinases. In adults, this gene is predominantly expressed in normal testes, various cancer cell lines and primary tumors from other tissues and is ubiquitously expressed in fetal tissues.

Stockage

Stockage:
Stocker à -20°C. Stable pendant un an après l'expédition.
Tampon de stockage:
PBS avec azoture de sodium à 0,02 % et glycérol à 50 % pH 7,3
L'aliquotage n'est pas nécessaire pour le stockage à -20C

***** Les 20ul contiennent 0,1% de BSA.**

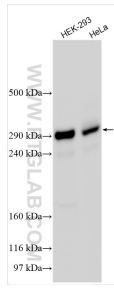
For technical support and original validation data for this product please contact:

T: 1 (888) 4PTGLAB (1-888-478-4522) (toll free in USA), or 1(312) 455-8498 (outside USA)

E: proteintech@ptglab.com
W: ptglab.com

This product is exclusively available under Proteintech Group brand and is not available to purchase from any other manufacturer.

Données de validation sélectionnées



Various lysates were subjected to SDS PAGE followed by western blot with 28695-1-AP (KNL1 antibody) at dilution of 1:4000 incubated at room temperature for 1.5 hours.