

À des fins de recherche uniquement

# Anticorps Polyclonal de lapin anti-METAP1



Numéro de catalogue: 28702-1-AP

## Informations de base

Numéro de catalogue: 28702-1-AP	Numéro d'acquisition GenBank: NM_015143	Méthode de purification: Purification par affinité contre l'antigène
Taille: 150ul, Concentration: 850 µg/ml by Nanodrop;	Identification du gène (NCBI): 23173	Dilutions recommandées: WB 1:1000-1:8000
Hôte: Lapin	Nom complet: methionyl aminopeptidase 1	
Isotype: IgG	MW calculé: 43 kDa	
Immunogen Catalog Number: AG29828	MW observés: 40-43 kDa	

## Applications

Applications testées: WB, ELISA	Contrôles positifs: WB : cellules HEK-293, cellules HeLa, cellules HUVEC
Spécificité de l'espèce: Humain	

## Informations générales

METAP1 (methionyl aminopeptidase 1), also known as MAP1A or MetAP1A, is expected to be located in cytosol and widely expressed in esophagus and testis. The calculated molecular weight of METAP1 is 43 kDa. METAP1 is expected to have aminopeptidase activity and metallo-exopeptidase activity. It is also involved in platelet aggregation. At the same time, HsMetAP1 participates in co-translation to remove N-terminal methionine from newborn protein. Studies have shown that when HsMetAP1 is knocked down by gene-specific siRNA, cells show slow progress in G(2)/M phase, which is similar to cells treated with MetAP1 inhibitors. Importantly, MetAP1 inhibitors can induce apoptosis of leukemia cell lines, which may be the result of their interference with G(2)/M checkpoint. Therefore, it is necessary for normal cell cycle, especially in G(2)/M phase of cell cycle, and it can be used as a promising target for discovering and developing new anticancer drugs (PMID: 17114291).

## Stockage

Stockage:  
Stocker à -20°C. Stable pendant un an après l'expédition.  
Tampon de stockage:  
PBS avec azoture de sodium à 0,02 % et glycérol à 50 % pH 7,3  
L'aliquotage n'est pas nécessaire pour le stockage à -20C

\*\*\* Les 20ul contiennent 0,1% de BSA.

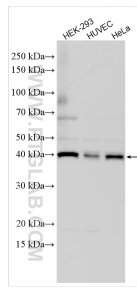
For technical support and original validation data for this product please contact:

T: 1 (888) 4PTGLAB (1-888-478-4522) (toll free in USA), or 1(312) 455-8498 (outside USA)

E: [proteintech@ptglab.com](mailto:proteintech@ptglab.com)  
W: [ptglab.com](http://ptglab.com)

This product is exclusively available under Proteintech Group brand and is not available to purchase from any other manufacturer.

## Données de validation sélectionnées



Various lysates were subjected to SDS PAGE followed by western blot with 28702-1-AP (METAP1 antibody) at dilution of 1:4000 incubated at room temperature for 1.5 hours.