

À des fins de recherche uniquement

Anticorps Polyclonal de lapin anti-RALYL



Numéro de catalogue: 28706-1-AP

Informations de base

Numéro de catalogue: 28706-1-AP	Numéro d'acquisition GenBank: BC031090	Méthode de purification: Purification par affinité contre l'antigène
Taille: 150ul , Concentration: 750 µg/ml by Nanodrop and 380 µg/ml by Bradford method using BSA as the standard;	Identification du gène (NCBI): 138046	Dilutions recommandées: WB 1:500-1:1000
Hôte: Lapin	Nom complet: RALY RNA binding protein-like	
Isotype: IgG	MW calculé: 291 aa, 32 kDa	
Immunogen Catalog Number: AG30310	MW observés: 33 kDa	

Applications

Applications testées: WB, ELISA	Contrôles positifs: WB : cellules HEK-293T, cellules HeLa
Spécificité de l'espèce: Humain	

Informations générales

RALY RNA binding protein-like (RALYL) belongs to the RALY subfamily. RALYL locates in 8q21.2, the function of which is RNA-binding and nucleotide binding. The RALYL high expression in the normal adrenal, kidney and brain (Shyamsundar et al., 2005). Furthermore, RALYL expression down-regulated correlates with mental disorder (Lee et al., 2007), Parkinson's disease (Moran et al., 2006), brain cancer (Maris et al., 2008), adrenal cancer (Giordano et al., 2009) and kidney cancer (Higgins et al., 2003). The expression of RALYL was significantly low in Clear Cell Renal Cell Carcinoma and correlated with a poor prognosis in a large number of clinical samples. Our findings showed that RALYL may be a potential therapeutic target as well as a poor prognostic

Stockage

Stockage:
Stocker à -20°C. Stable pendant un an après l'expédition.
Tampon de stockage:
PBS avec azoture de sodium à 0,02 % et glycérol à 50 % pH 7,3
L'aliquotage n'est pas nécessaire pour le stockage à -20C

***** Les 20ul contiennent 0,1% de BSA.**

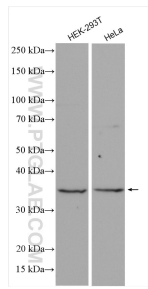
For technical support and original validation data for this product please contact:

T: 1 (888) 4PTGLAB (1-888-478-4522) (toll free in USA), or 1(312) 455-8498 (outside USA)

E: proteintech@ptglab.com
W: ptglab.com

This product is exclusively available under Proteintech Group brand and is not available to purchase from any other manufacturer.

Données de validation sélectionnées



Various lysates were subjected to SDS PAGE followed by western blot with 28706-1-AP (RALYL antibody) at dilution of 1:500 incubated at room temperature for 1.5 hours.