

À des fins de recherche uniquement

Anticorps Polyclonal de lapin anti-ODC1



Numéro de catalogue: 28728-1-AP

13 Publications

Informations de base

Numéro de catalogue:

28728-1-AP

Taille:

150ul, Concentration: 400 µg/ml by Nanodrop;

Hôte:

Lapin

Isotype:

IgG

Immunogen Catalog Number:

AG29751

Numéro d'acquisition GenBank:

BC025296

Identification du gène (NCBI):

4953

Nom complet:

ornithine decarboxylase 1

MW calculé

461 aa, 51 kDa

MW observés:

51 kDa

Méthode de purification:

Purification par affinité contre l'antigène

Dilutions recommandées:

WB 1:1000-1:4000

Applications

Applications testées:

WB, ELISA

Demandes citées:

IF, IHC, WB

Spécificité de l'espèce:

Humain, souris

Espèces citées:

Humain, porc, rat, souris

Contrôles positifs:

WB : cellules HeLa, cellules HepG2, cellules LNCaP, tissu de thymus de souris

Informations générales

Ornithine decarboxylase (ODC) is also named as ODC1 and belongs to the Orn/Lys/Arg decarboxylase class-II family. It catalyzes the conversion of ornithine to putrescine, the first step and a major site of regulation of polyamine biosynthesis. The level of ODC is known to be controlled at several sites, namely transcription, translation, and enzyme degradation. Polyamines can stimulate the degradation of ODC as a type of negative feedback control (PMID:8486633). This protein can be phosphorylated in vivo (PMID:8798774). ODC1 can form a homodimer and only the dimer is catalytically active, as the active sites are constructed of residues from both monomers (PMID: 10623504). The molecular mass of ODC1 is 51 kDa, and the homodimer is 106 kDa.

Publications notables

Autrice	Pubmed ID	Journal	Application
Takeshi Uemura	32995657	Heliyon	WB
Yanrong Zhou	33002680	Vet Microbiol	WB
Zhirui Zeng	33244237	Onco Targets Ther	WB

Stockage

Stockage:

Stocker à -20°C. Stable pendant un an après l'expédition.

Tampon de stockage:

PBS avec azoture de sodium à 0,02 % et glycérol à 50 % pH 7,3

L'aliquotage n'est pas nécessaire pour le stockage à -20°C

*** Les 20ul contiennent 0,1% de BSA.

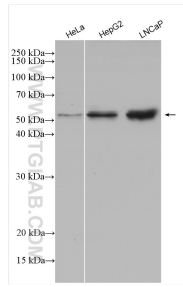
For technical support and original validation data for this product please contact:

T: 1 (888) 4PTGLAB (1-888-478-4522) (toll free in USA), or 1(312) 455-8498 (outside USA)

E: proteintech@ptglab.com
W: ptglab.com

This product is exclusively available under Proteintech Group brand and is not available to purchase from any other manufacturer.

Données de validation sélectionnées



Various lysates were subjected to SDS PAGE followed by western blot with 28728-1-AP (ODC1 antibody) at dilution of 1:2000 incubated at room temperature for 1.5 hours.