

À des fins de recherche uniquement

Anticorps Polyclonal de lapin anti-Phospho-CREB1 (Ser133)



Numéro de catalogue: 28792-1-AP

7 Publications

Informations de base

Numéro de catalogue:

28792-1-AP

Taille:

100ul, Concentration: 200 µg/ml by Nanodrop;

Hôte:

Lapin

Isotype:

IgG

Numéro d'acquisition GenBank:

BC010636

Identification du gène (NCBI):

1385

Nom complet:

cAMP responsive element binding protein 1

MW calculé

341 aa, 35 kDa

MW observés:

35-46 kDa

Méthode de purification:

Purification par affinité contre l'antigène

Dilutions recommandées:

WB 1:1000-1:8000

IHC 1:50-1:500

Applications

Applications testées:

IHC, WB, ELISA

Demandes citées:

WB

Spécificité de l'espèce:

Humain, rat

Espèces citées:

Humain, souris

Contrôles positifs:

WB : cellules HSC-T6 traitées à la forskoline,

IHC : tissu hépatique humain,

Remarque-IHC: il est suggéré de démasquer l'antigène avec un tampon de TE buffer pH 9,0; (*) À défaut, le démasquage de l'antigène peut être effectué avec un tampon citrate pH 6,0.

Informations générales

The cAMP-response element binding protein (CREB) is localized in the nucleus and acts as a transcription factor, which binds to the cAMP response element (CRE) of the promoters of its target genes, upon phosphorylation at Ser133 by different receptor-activated protein kinases, such as protein kinase A (PKA), calmodulin-dependent protein kinase (CaMK), mitogen-activated protein kinases (MAPK), and other kinases. The activity of CREB1 in neurons has been correlated with various intracellular processes, including proliferation, differentiation, survival, long-term synaptic potentiation, neurogenesis, and neuronal plasticity. CREB1 belongs to the CREB/activating transcription factor (ATF) family of transcription factors. The antibody also detects the phosphorylated form of the CREB-related protein ATF1. (PMID: 30214393, PMID: 33917483, PMID: 32605164)

Publications notables

Autrice	Pubmed ID	Journal	Application
Jia Liu	35605921	J Ethnopharmacol	WB
Peng Xu	35278661	Brain Res Bull	WB
Xiaoye Fan	36608590	Redox Biol	WB

Stockage

Stockage:

Stocker à -20°C. Stable pendant un an après l'expédition.

Tampon de stockage:

PBS avec azoture de sodium à 0,02 % et glycérol à 50 % pH 7,3

L'aliquoteur n'est pas nécessaire pour le stockage à -20C

*** Les 20ul contiennent 0,1% de BSA.

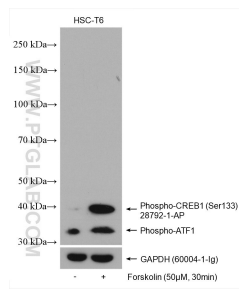
For technical support and original validation data for this product please contact:

T: 1 (888) 4PTGLAB (1-888-478-4522) (toll free in USA), or 1(312) 455-8498 (outside USA)

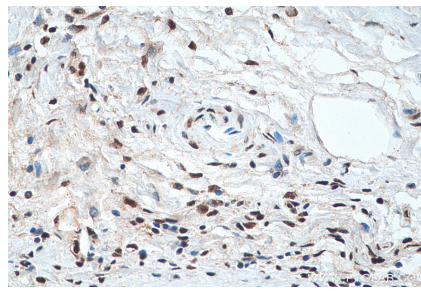
E: proteintech@ptglab.com
W: ptglab.com

This product is exclusively available under Proteintech Group brand and is not available to purchase from any other manufacturer.

Données de validation sélectionnées



Non-treated and Forskolin treated HSC-T6 cells were subjected to SDS PAGE followed by western blot with 28792-1-AP (Phospho-CREB1 (Ser133) antibody) at dilution of 1:4000 incubated at room temperature for 1 hours. The membrane was stripped and re-blotted with GAPDH antibody as loading control.



Immunohistochemical analysis of paraffin-embedded human liver tissue slide using 28792-1-AP (Phospho-CREB1 (Ser133) antibody) at dilution of 1:200 (under 40x lens). Heat mediated antigen retrieval with Tris-EDTA buffer (pH 9.0).