

À des fins de recherche uniquement

Anticorps Polyclonal de lapin anti-Phospho-Chk1 (Ser345)



Numéro de catalogue: 28803-1-AP

1 Publications

Informations de base

Numéro de catalogue:

28803-1-AP

Taille:

100ul, Concentration: 330 µg/ml by Nanodrop;

Hôte:

Lapin

Isotype:

IgG

Numéro d'acquisition GenBank:

BC004202

Identification du gène (NCBI):

1111

Nom complet:

CHK1 checkpoint homolog (S. pombe)

MW calculé

54 kDa

MW observés:

50 kDa

Méthode de purification:

Purification par affinité contre l'antigène

Dilutions recommandées:

WB 1:500-1:2000

IF 1:200-1:800

Applications

Applications testées:

IF, WB, ELISA

Demandes citées:

WB

Spécificité de l'espèce:

Humain, souris

Espèces citées:

Humain

Contrôles positifs:

WB : cellules NIH/3T3 traitées à la calyculine A, cellules HeLa traitées à la calyculine A

IF : cellules HeLa traitées à la calyculine A,

Informations générales

The checkpoint kinase 1 (Chk1) is a conserved kinase that imposes cell cycle delays in response to impediments to DNA replication. Chk1 kinase is downstream of the ATR kinase. ATR phosphorylates Chk1 kinase and other proteins to ensure replication is being blocked as to avoid replication fork collapse and DNA damage. Activation of Chk1 involves phosphorylation at Ser317 and Ser345 by ATM/ATR, followed by autophosphorylation of Ser296. In vitro Chk1 binds to and phosphorylate the dual-specificity protein phosphatases Cdc25A, Cdc25B, and Cdc25C, which control cell cycle transitions by dephosphorylating cyclin-dependent kinases. (PMID:22941630, PMID: 32571801, PMID:19276361)

Publications notables

Autrice	Pubmed ID	Journal	Application
Haochen Su	37517142	Transl Oncol	WB

Stockage

Stockage:

Stocker à -20°C. Stable pendant un an après l'expédition.

Tampon de stockage:

PBS avec azoture de sodium à 0,02 % et glycérol à 50 % pH 7,3

L'aliquotage n'est pas nécessaire pour le stockage à -20C

*** Les 20ul contiennent 0,1% de BSA.

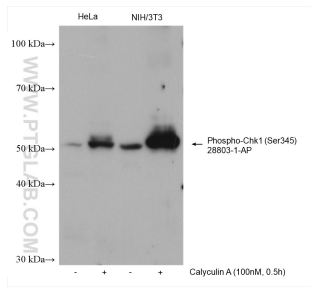
For technical support and original validation data for this product please contact:

T: 1 (888) 4PTGLAB (1-888-478-4522) (toll free in USA), or 1(312) 455-8498 (outside USA)

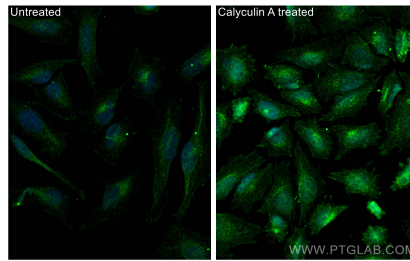
E: proteintech@ptglab.com
W: ptglab.com

This product is exclusively available under Proteintech Group brand and is not available to purchase from any other manufacturer.

Données de validation sélectionnées



Non-treated and Calyculin A treated cells were subjected to SDS PAGE followed by western blot with 28803-1-AP (Phospho-Chk1 (Ser345) antibody) at dilution of 1:1000 incubated at room temperature for 1 hours.



Immunofluorescent analysis of (4% PFA) fixed Calyculin A treated HeLa cells using Phospho-Chk1 (Ser345) antibody (28803-1-AP) at dilution of 1:400 and CoraLite® 488-Conjugated AffiniPure Goat Anti-Rabbit IgG(H+L).