

À des fins de recherche uniquement

# Anticorps Polyclonal de lapin anti-Phospho-GYS1 (Ser641)



Numéro de catalogue: 28855-1-AP

## Informations de base

Numéro de catalogue: 28855-1-AP	Numéro d'acquisition GenBank: BC007688	Méthode de purification: Purification par protéine A
Taille: 100ul , Concentration: 300 µg/ml by Nanodrop;	Identification du gène (NCBI): 2997	Dilutions recommandées: WB 1:2000-1:12000
Hôte: Lapin	Nom complet: glycogen synthase 1 (muscle)	
Isotype: IgG	MW calculé 84 kDa	
	MW observés: 84 kDa	

## Applications

Applications testées: WB, ELISA	Contrôles positifs: WB : λ phosphatase treated PC-3 cells,
Spécificité de l'espèce: Humain	

## Informations générales

Glycogen synthase 1 (GYS1, GS) catalyzes the key step of glycogen synthesis and plays an important role in glycogen metabolism in liver and muscle. In kidney tissues, glycogen synthase 1 (GYS1) is the most important rate-limiting enzyme functioning in the last step of glycogen synthesis. Pathologically, its deficiency has been shown to cause muscle glycogen storage disease type 0 and death. Studies of tumors showed that GYS1 was rapidly induced under hypoxic conditions and positively correlated with glycogen accumulation in glioblastoma, breast, and colon cancer cell lines. GYS1 is phosphorylated at nine sites and insulin stimulates dephosphorylation of glycogen synthase. Insulin stimulates dephosphorylation of glycogen synthase via PKB-mediated phosphorylation of GSK3. Phosphorylation of GSK3 decreases kinase activity which will decrease phosphorylation of GS and increase glycogen synthase fractional activity. (PMID: 32802186, PMID: 30443599, PMID: 22232606)

## Stockage

**Stockage:**  
Stocker à -20°C. Stable pendant un an après l'expédition.  
**Tampon de stockage:**  
PBS avec azoture de sodium à 0,02 % et glycérol à 50 % pH 7,3  
L'aliquotage n'est pas nécessaire pour le stockage à -20C

\*\*\* Les 20ul contiennent 0,1% de BSA.

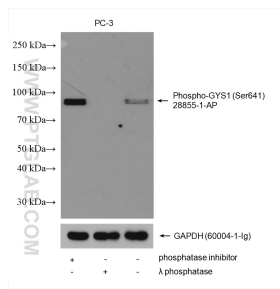
For technical support and original validation data for this product please contact:

T: 1 (888) 4PTGLAB (1-888-478-4522) (toll free  
in USA), or 1(312) 455-8498 (outside USA)

E: [proteintech@ptglab.com](mailto:proteintech@ptglab.com)  
W: [ptglab.com](http://ptglab.com)

This product is exclusively available under Proteintech Group brand and is not available to purchase from any other manufacturer.

## Données de validation sélectionnées



Non-treated PC-3 cells, phosphatase inhibitor treated and  $\lambda$  phosphatase PC-3 cells were subjected to SDS PAGE followed by western blot with 28855-1-AP (Phospho-GYS1 (Ser641) antibody) at dilution of 1:6000 incubated at room temperature for 1.5 hours. The membrane was stripped and re-blotted with GAPDH antibody as loading control.