

À des fins de recherche uniquement

Anticorps Polyclonal de lapin anti-ACE2



Numéro de catalogue: 28868-1-AP **Phare**

Informations de base

Numéro de catalogue: 28868-1-AP	Numéro d'acquisition GenBank: BC048094	Méthode de purification: Purification par affinité contre l'antigène
Taille: 150ul , Concentration: 970 µg/ml by Nanodrop;	Identification du gène (NCBI): 59272	Dilutions recommandées: WB 1:500-1:1000 IHC 1:50-1:500 IF 1:200-1:800
Hôte: Lapin	Nom complet: angiotensin I converting enzyme (peptidyl-dipeptidase A) 2	
Isotype: IgG	MW calculé 805 aa, 92 kDa	
Immunogen Catalog Number: AG30683	MW observés: 92, 120 kDa	

Applications

Applications testées:

IF, IHC, WB, ELISA

Spécificité de l'espèce:

Humain, rat, souris

Remarque-IHC: il est suggéré de démasquer l'antigène avec un tampon de TE buffer pH 9.0; (*) À défaut, 'le démasquage de l'antigène peut être effectué avec un tampon citrate pH 6,0.

Contrôles positifs:

WB : tissu rénal de souris, cellules HeLa, tissu testiculaire de rat, tissu testiculaire de souris

IHC : tissu rénal humain, tissu d'intestin grêle humain

IF : tissu rénal de souris,

Informations générales

ACE2 (Angiotensin-converting enzyme 2), also named as ACEH, is a zinc metalloprotease of the ACE family and a critical regulator of the reninangiotensin system. ACE2 has a more restricted tissue distribution than ACE, being found predominantly in the heart, kidneys, and testes although low levels have been detected in a variety of tissues (PMID:15983030). ACE2 has been shown to be a functional receptor of the human coronaviruses SARS-CoV and SARS-CoV-2 (PMID: 32142651). The expression level and expression pattern of human ACE2 in different tissues might be critical for the susceptibility, symptoms, and outcome of 2019-nCoV/SARS-CoV-2 infection (PMID: 32133153). It can be used as a potential therapeutic target of SARS-CoV-2 (PMID: 32125455). The calculated molecular weight of ACE2 is 92kDa but it migrates to 120kDa due to N-glycosylation (PMID:16166094). Sometimes, several cleaved fragments can also be detected as 75kDa, 50 kDa or 37kDa (PMID: 29561187, 22009550, 30759273). It has 2 isoforms produced by alternative splicing. This antibody is specific to ACE2. The location of ACE2 is membrane and cytoplasm, however it accumulates in the nucleus during the mitosis (PMID: 1730413/PMID: 18292088). 28868-1-AP is specific for ACE2, and its antigen region is 30-356aa.

Stockage

Stockage:

Stocker à -20°C. Stable pendant un an après l'expédition.

Tampon de stockage:

PBS avec azoture de sodium à 0,02 % et glycérol à 50 % pH 7,3

L'aliquotage n'est pas nécessaire pour le stockage à -20C

***** Les 20ul contiennent 0,1% de BSA.**

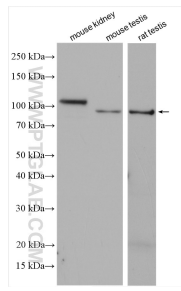
For technical support and original validation data for this product please contact:

T: 1 (888) 4PTGLAB (1-888-478-4522) (toll free in USA), or 1(312) 455-8498 (outside USA)

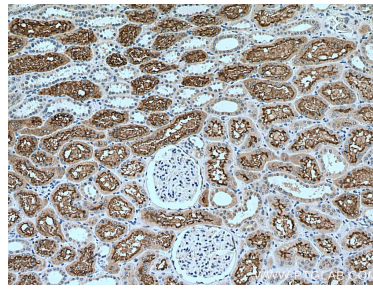
E: proteintech@ptglab.com
W: ptglab.com

This product is exclusively available under Proteintech Group brand and is not available to purchase from any other manufacturer.

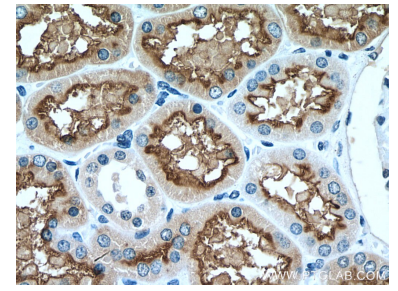
Données de validation sélectionnées



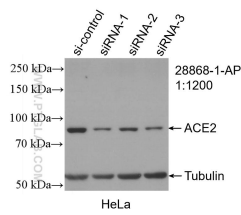
Various lysates were subjected to SDS PAGE followed by western blot with 28868-1-AP (ACE2 antibody) at dilution of 1:600 incubated at room temperature for 1.5 hours.



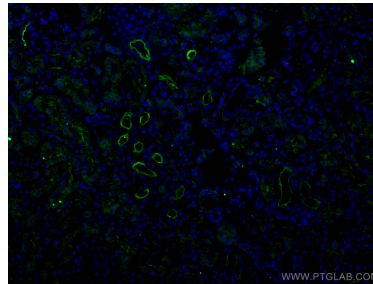
Immunohistochemical analysis of paraffin-embedded human kidney tissue slide using 28868-1-AP (ACE2 antibody) at dilution of 1:200 (under 10x lens). Heat mediated antigen retrieval with Tris-EDTA buffer (pH 9.0).



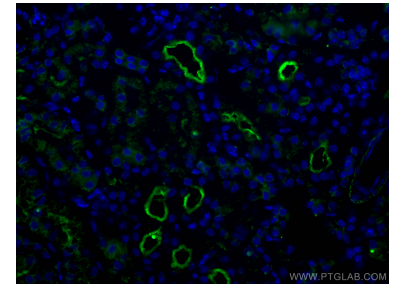
Immunohistochemical analysis of paraffin-embedded human kidney tissue slide using 28868-1-AP (ACE2 antibody) at dilution of 1:200 (under 40x lens). Heat mediated antigen retrieval with Tris-EDTA buffer (pH 9.0).



WB result of ACE2 antibody (28868-1-AP; 1:1200; incubated at room temperature for 1.5 hours) with sh-Control and sh-ACE2 transfected HeLa cells.



Immunofluorescent analysis of (4% PFA) fixed mouse kidney tissue using ACE2 antibody (28868-1-AP) at dilution of 1:400 and CoraLite@488-Conjugated AffiniPure Goat Anti-Rabbit IgG(H+L).



Immunofluorescent analysis of (4% PFA) fixed mouse kidney tissue using ACE2 antibody (28868-1-AP) at dilution of 1:400 and CoraLite@488-Conjugated AffiniPure Goat Anti-Rabbit IgG(H+L).