

À des fins de recherche uniquement

Anticorps Polyclonal de lapin anti-Phospho-SMAD1 (Ser214)



Numéro de catalogue: 28895-1-AP

1 Publications

Informations de base

Numéro de catalogue:

28895-1-AP

Taille:

100ul , Concentration: 450 µg/ml by Nanodrop;

Hôte:

Lapin

Isotype:

IgG

Numéro d'acquisition GenBank:

BC001878

Identification du gène (NCBI):

4086

Nom complet:

SMAD family member 1

MW calculé

52 kDa

MW observés:

52 kDa

Méthode de purification:

Purification par affinité contre l'antigène

Dilutions recommandées:

WB 1:2000-1:16000

Applications

Applications testées:

WB, ELISA

Demandes citées:

WB

Spécificité de l'espèce:

Humain

Espèces citées:

souris

Contrôles positifs:

WB : cellules HepG2 traitées à l'BMP2,

Informations générales

SMAD family member 1 (Smad1) have been involved in metastatic progression of many cancer types. Smad1 can be induced by many tumor-stimulating cytokines such as the bone morphogenetic protein 2 (BMP2) and TNF α and plays important roles in cell invasion and metastasis. BMP2 signalling is initiated by binding to its specific receptors, which leads to in the phosphorylation and nuclear translocation of Smad1. Translocated Smad1 then modulates the expression of downstream osteogenic genes. (PMID: 32954678, PMID: 30008908)

Publications notables

Autrice	Pubmed ID	Journal	Application
Tianyu Li	34823766	Carbohydr Polym	WB

Stockage

Stockage:

Stocker à -20°C. Stable pendant un an après l'expédition.

Tampon de stockage:

PBS avec azoture de sodium à 0,02 % et glycérol à 50 % pH 7,3

L'aliquotage n'est pas nécessaire pour le stockage à -20C

*** Les 20ul contiennent 0,1% de BSA.

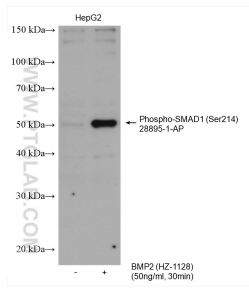
For technical support and original validation data for this product please contact:

T: 1 (888) 4PTGLAB (1-888-478-4522) (toll free in USA), or 1(312) 455-8498 (outside USA)

E: proteintech@ptglab.com
W: ptglab.com

This product is exclusively available under Proteintech Group brand and is not available to purchase from any other manufacturer.

Données de validation sélectionnées



Non-treated HepG2 and BMP2 (HZ-1128) treated HepG2 cells were subjected to SDS PAGE followed by western blot with 28895-1-AP (Phospho-SMAD1 (Ser214) antibody) at dilution of 1:8000 incubated at room temperature for 1 hours.