

À des fins de recherche uniquement

Anticorps Polyclonal de lapin anti-SARS-CoV-2 Envelope Protein



Numéro de catalogue: 28904-1-AP

1 Publications

Informations de base

Numéro de catalogue:

28904-1-AP

Taille:

150ul , Concentration: 575 µg/ml by Nanodrop;

Hôte:

Lapin

Isotype:

IgG

Immunogen Catalog Number:

AG30690

Numéro d'acquisition GenBank:

NC_045512

Identification du gène (NCBI):

43740570

Nom complet:

COVID-19 E Protein

Méthode de purification:

Purification par affinité contre l'antigène

Applications

Applications testées:

ELISA

Demandes citées:

IF

Spécificité de l'espèce:

Virus

Espèces citées:

Humain

Informations générales

Envelope protein of coronaviruses is a structural protein existing in both monomeric and homopentameric form. It is a minor component of the virus membrane though it is deemed to be important for many stages including virus infection, replication, dissemination and immune response stimulation. Sequence comparison has shown that this protein is identical to the counterparts of specific Bat and Pangolin coronavirus isolates, even though the Sars-CoV-2 sequence seems to possess specific modifications and characteristics with respect to other Sars CoVs (PMID:32596311). The SARS-CoV-2 envelope protein provide a strategy to assess cross-protection against COVID-19 (PMID: 32446902).

Publications notables

Autrice	Pubmed ID	Journal	Application
Jiahang Ju	36082238	Front Cell Neurosci	IF

Stockage

Stockage:

Store at -20°C. Stable for one year after shipment.

Tampon de stockage:

PBS avec azoture de sodium à 0,02 % et glycérol à 50 % pH 7,3

L'aliquotage n'est pas nécessaire pour le stockage à -20C

*** Les 20ul contiennent 0,1% de BSA.

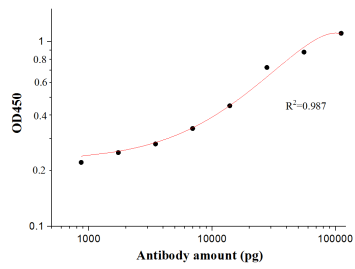
For technical support and original validation data for this product please contact:

T: 1 (888) 4PTGLAB (1-888-478-4522) (toll free in USA), or 1(312) 455-8498 (outside USA)

E: proteintech@ptglab.com
W: ptglab.com

This product is exclusively available under Proteintech Group brand and is not available to purchase from any other manufacturer.

Données de validation sélectionnées



SARS-CoV-2 Envelope protein Antibody (28904-1-AP) tested by ELISA. SARS-CoV-2 Envelope protein was coated onto microtiter plates at 0.15 $\mu\text{g}/\text{well}$ and then incubated with a dilution series of SARS-CoV-2 Envelope protein Antibody (28904-1-AP). Bound antibodies were detected with HRP conjugated anti-Rabbit IgG followed by incubation with HRP Substrate and then measuring the resulting absorbance at 450 nm.