

À des fins de recherche uniquement

# Anticorps Polyclonal de lapin anti-Phospho-PLA2G4A (Ser505)



Numéro de catalogue: 28925-1-AP

## Informations de base

Numéro de catalogue:

28925-1-AP

Taille:

100ul, Concentration: 200 µg/ml by Nanodrop;

Hôte:

Lapin

Isotype:

IgG

Numéro d'acquisition GenBank:

BC114340

Identification du gène (NCBI):

5321

Nom complet:

phospholipase A2, group IVA (cytosolic, calcium-dependent)

MW calculé

749 aa, 85 kDa

MW observés:

100-110 kDa

Méthode de purification:

Purification par affinité contre l'antigène

Dilutions recommandées:

WB 1:1000-1:6000

## Applications

Applications testées:

WB, ELISA

Spécificité de l'espèce:

Humain

Contrôles positifs:

WB : cellules HeLa traitées à la  $\lambda$  phosphatase,

## Informations générales

PLA2G4A, also named as cPLA2 (cytosolic phospholipase A2), is a highly conserved and widely expressed enzyme which can promote lipid mediator production. PLA2G4A plays a major role in membrane lipid remodeling and biosynthesis of lipid mediators of the inflammatory response. It has been reported that the activity and expression levels of PLA2G4A are upregulated in several neurodegenerative diseases. PLA2G4A can be activated at the phosphorylation site of ser505 by MAP kinase. (PMID: 25838312, 8381049, 31238788)

## Stockage

Stockage:

Stocker à -20°C. Stable pendant un an après l'expédition.

Tampon de stockage:

PBS avec azoture de sodium à 0,02% et glycérol à 50 % pH 7,3 et BSA à 0,05 %.

L'aliquotage n'est pas nécessaire pour le stockage à -20C

**\*\*\* Les 20ul contiennent 0,1% de BSA.**

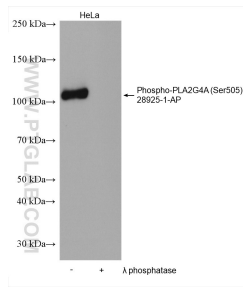
For technical support and original validation data for this product please contact:

T: 1 (888) 4PTGLAB (1-888-478-4522) (toll free in USA), or 1(312) 455-8498 (outside USA)

E: [proteintech@ptglab.com](mailto:proteintech@ptglab.com)  
W: [ptglab.com](http://ptglab.com)

This product is exclusively available under Proteintech Group brand and is not available to purchase from any other manufacturer.

## Données de validation sélectionnées



Non-treated HeLa and  $\lambda$  phosphatase treated HeLa cells were subjected to SDS PAGE followed by western blot with 28925-1-AP (Phospho-PLA2G4A (Ser505) antibody) at dilution of 1:3000 incubated at 4°C overnight.