

À des fins de recherche uniquement

Anticorps Polyclonal de lapin anti-Phospho-MEK1 (Thr386)



Numéro de catalogue: 28935-1-AP

Informations de base

Numéro de catalogue:

28935-1-AP

Taille:

100ul, Concentration: 200 µg/ml by Nanodrop;

Hôte:

Lapin

Isotype:

IgG

Numéro d'acquisition GenBank:

BC139729

Identification du gène (NCBI):

5604

Nom complet:

mitogen-activated protein kinase kinase 1

MW calculé

43 kDa

MW observés:

40-45 kDa

Méthode de purification:

Purification par affinité contre l'antigène

Dilutions recommandées:

WB 1:1000-1:4000

Applications

Applications testées:

WB, ELISA

Spécificité de l'espèce:

Humain

Contrôles positifs:

WB : cellules HeLa traitées à la λ phosphatase,

Informations générales

MEK1 is also named as MAP2K1 (mitogen-activated protein kinase kinase 1), MAPKK1, PRKMK1, MKK1 and belongs to the MAP kinase kinase subfamily. It is a dual-specificity kinase that mediate ERK1 and ERK2 activation during adhesion and growth factor signaling(PMID:19219045). It also plays an essential role in extra-embryonic ectoderm during placentogenesis. MEK1 has 2 isoforms produced by alternative splicing with the molecular weight of 43 kDa and 41 kDa. MEK1 may form a heterodimer with MEK2.(PMID:21144847,19219045).

Stockage

Stockage:

Stocker à -20°C. Stable pendant un an après l'expédition.

Tampon de stockage:

PBS avec azoture de sodium à 0,02 %, glycérol à 50 % pH 7,3, et BSA à 0,05 %.

L'aliquotage n'est pas nécessaire pour le stockage à -20C

***** Les 20ul contiennent 0,1% de BSA.**

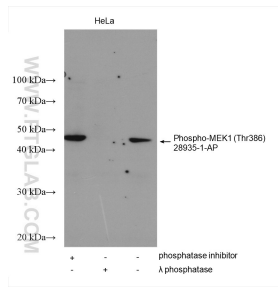
For technical support and original validation data for this product please contact:

T: 1 (888) 4PTGLAB (1-888-478-4522) (toll free in USA), or 1(312) 455-8498 (outside USA)

E: proteintech@ptglab.com
W: ptglab.com

This product is exclusively available under Proteintech Group brand and is not available to purchase from any other manufacturer.

Données de validation sélectionnées



Non-treated HeLa cells, phosphatase inhibitor treated and λ phosphatase treated HeLa cells were subjected to SDS PAGE followed by western blot with 28935-1-AP (Phospho-MEK1 (Thr386) antibody) at dilution of 1:2000 incubated at room temperature for 1.5 hours.