

À des fins de recherche uniquement

# Anticorps Polyclonal de lapin anti-Phospho-STAT5A(Ser726)/STAT5B (Ser731)



Numéro de catalogue: **28951-1-AP**

## Informations de base

<b>Numéro de catalogue:</b> 28951-1-AP	<b>Numéro d'acquisition GenBank:</b> BC027036	<b>Méthode de purification:</b> Purification par affinité contre l'antigène
<b>Taille:</b> 100ul , Concentration: 150 µg/ml by Nanodrop;	<b>Identification du gène (NCBI):</b> 6776	<b>Dilutions recommandées:</b> WB 1:1000-1:4000
<b>Hôte:</b> Lapin	<b>Nom complet:</b> signal transducer and activator of transcription 5A	
<b>Isotype:</b> IgG	<b>MW calculé:</b> 794 aa, 92 kDa	
	<b>MW observés:</b> 90-95 kDa	

## Applications

**Applications testées:**

WB, ELISA

**Spécificité de l'espèce:**

Humain

**Contrôles positifs:**

WB : cellules TF-1 traitées au GM-CSF,

## Informations générales

STAT5A, also named as STAT5, belongs to the transcription factor STAT family. In response to cytokines and growth factors, STAT family members are phosphorylated by the receptor associated kinases, and then form homo- or heterodimers that translocate to the cell nucleus where they act as transcription activators. STAT5A is activated by, and mediates the responses of many cell ligands, such as IL2, IL3, IL7 GM-CSF, erythropoietin, thrombopoietin, and different GHs. This antibody can recognize the phosphorylation of STAT5A at Ser726 and the phosphorylation of STAT5B at Ser731.

## Stockage

**Stockage:**

Stocker à -20°C. Stable pendant un an après l'expédition.

**Tampon de stockage:**

PBS avec azoture de sodium à 0,1 % et glycérol à 50 % pH 7,3, et BSA à 0,05 %.

L'aliquotage n'est pas nécessaire pour le stockage à -20C

**\*\*\* Les 20ul contiennent 0,1% de BSA.**

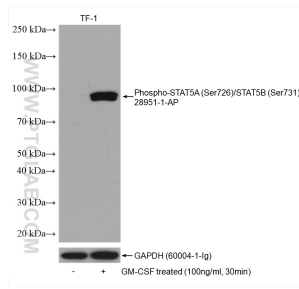
For technical support and original validation data for this product please contact:

T: 1 (888) 4PTGLAB (1-888-478-4522) (toll free in USA), or 1(312) 455-8498 (outside USA)

E: [proteintech@ptglab.com](mailto:proteintech@ptglab.com)  
W: [ptglab.com](http://ptglab.com)

**This product is exclusively available under Proteintech Group brand and is not available to purchase from any other manufacturer.**

## Données de validation sélectionnées



Non-treated TF-1 and GM-CSF treated TF-1 cells were subjected to SDS PAGE followed by western blot with 28951-1-AP (Phospho-STAT5A(Ser726)/STAT5B (Ser731) antibody) at dilution of 1:2000 incubated at 4°C overnight. The membrane was stripped and re-blotted with GAPDH antibody as loading control.