

À des fins de recherche uniquement

Anticorps Polyclonal de lapin anti-Phospho-TBC1D1 (Ser660)



Numéro de catalogue: 29034-1-AP

Informations de base

Numéro de catalogue:
29034-1-AP

Taille:
100ul , Concentration: 300 µg/ml by
Nanodrop;

Hôte:
Lapin

Isotype:
IgG

Numéro d'acquisition GenBank:
BC050321

Identification du gène (NCBI):
23216

Nom complet:
TBC1 (tre-2/USP6, BUB2, cdc16)
domain family, member 1

MW calculé
133 kDa

MW observés:
160 kDa

Méthode de purification:
Purification par affinité contre
l'antigène

Dilutions recommandées:
WB 1:5000-1:50000

Applications

Applications testées:
WB, ELISA

Spécificité de l'espèce:
Humain

Contrôles positifs:

WB : cellules HeLa traitées à la calyculine A,

Informations générales

TBC1D1 belong to the family of RabGAPs and its physiological roles in glucose homeostasis and its implication in human diseases have already been characterized in skeletal muscle and adipocytes in a large number of independent studies. TBC1D1 including twophospho-tyrosine-binding (PTB) domains, a calmodulin-binding domain(CBD) and the functional GAP domain responsible for catalyzing GTP hydrolysis. TBC1D1 is phosphorylated by AMPK at Ser660 and Thr237, and by AKT at Thr596. The RabGAPs TBC1D1 is important regulators of glucose homeostasis inskeletal muscle and adipose tissue. (PMID: 31627187, PMID: 18477703)

Stockage

Stockage:
Stocker à -20 °C

Tampon de stockage:
PBS avec azoture de sodium à 0,02 %, glycérol à 50 % pH 7,3, et BSA à 0,05 %
L'aliquotage n'est pas nécessaire pour le stockage à -20C

*** Les 20ul contiennent 0,1% de BSA.

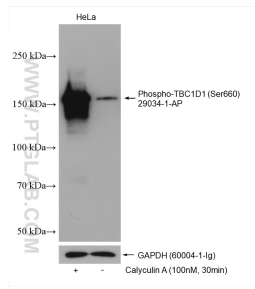
For technical support and original validation data for this product please contact:

T: 1 (888) 4PTGLAB (1-888-478-4522) (toll free
in USA), or 1(312) 455-8498 (outside USA)

E: proteintech@ptglab.com
W: ptglab.com

This product is exclusively available under Proteintech Group brand and is not available to purchase from any other manufacturer.

Données de validation sélectionnées



Non-treated HeLa and Calyculin A treated HeLa cells were subjected to SDS PAGE followed by western blot with 29034-1-AP (Phospho-TBC1D1 (Ser660) antibody) at dilution of 1:10000 incubated at room temperature for 1 hours.