

À des fins de recherche uniquement

Anticorps Polyclonal de lapin anti-Phospho-PKN1 (Thr774)



Numéro de catalogue: 29107-1-AP

Informations de base

Numéro de catalogue: 29107-1-AP	Numéro d'acquisition GenBank: BC040061	Méthode de purification: Purification par affinité contre l'antigène
Taille: 100ul , Concentration: 300 µg/ml by Nanodrop;	Identification du gène (NCBI): 5585	Dilutions recommandées: WB 1:2000-1:10000
Hôte: Lapin	Nom complet: protein kinase N1	
Isotype: IgG	MW calculé: 942 aa, 104 kDa	
	MW observés: 130 kDa	

Applications

Applications testées: WB, ELISA	Contrôles positifs: WB : cellules NIH/3T3 traitées au PDGF,
Spécificité de l'espèce: Humain, souris	

Informations générales

PKN1 is a stress-responsive kinase and a member of the protein kinase novel (PKN) family also known as protein kinase C-related kinases (PRKs). PKN1 acting downstream of small GTP-binding proteins of the Rho/Rac family. The interaction of Rho with PKN1 induces a conformational change in PKN1 leading to activation loop phosphorylation by PDK1 on Thr774 in the case of human PKN1 (Thr778 in mouse/rat) which is necessary for the catalytic activation of PKN1/2 and critical for the stability of the protein. (PMID: 29045568, PMID: 21037231)

Stockage

Stockage:
Stocker à -20 °C.
Tampon de stockage:
PBS avec azoture de sodium à 0,02 % et glycérol à 50 % pH 7,3
L'aliquotage n'est pas nécessaire pour le stockage à -20C

***** Les 20ul contiennent 0,1% de BSA.**

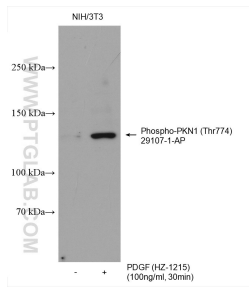
For technical support and original validation data for this product please contact:

T: 1 (888) 4PTGLAB (1-888-478-4522) (toll free in USA), or 1(312) 455-8498 (outside USA)

E: proteintech@ptglab.com
W: ptglab.com

This product is exclusively available under Proteintech Group brand and is not available to purchase from any other manufacturer.

Données de validation sélectionnées



Non-treated and PDGF (HZ-1215) treated NIH/3T3 cells were subjected to SDS PAGE followed by western blot with 29107-1-AP (Phospho-PKN1 (Thr774) antibody) at dilution of 1:5000 incubated at room temperature for 1 hours.