

À des fins de recherche uniquement

Anticorps Polyclonal de lapin anti-RAB20



Numéro de catalogue: 29110-1-AP

Informations de base

| | | | | | |
|---------------------------|---|--------------------------------|-----------------------------------|--------------------------|---|
| Numéro de catalogue: | 29110-1-AP | Numéro d'acquisition GenBank: | BC026025 | Méthode de purification: | Purification par affinité contre l'antigène |
| Taille: | 150ul, Concentration: 1000 µg/ml by Nanodrop; | Identification du gène (NCBI): | 55647 | Dilutions recommandées: | WB 1:500-1:2000 IHC 1:50-1:500 |
| Hôte: | Lapin | Nom complet: | RAB20, member RAS oncogene family | | |
| Isotype: | IgG | MW calculé: | 26 kDa | | |
| Immunogen Catalog Number: | AG30459 | MW observés: | 29 kDa | | |

Applications

| | | | |
|--------------------------|----------------|---------------------|---|
| Applications testées: | IHC, WB, ELISA | Contrôles positifs: | WB : cellules HeLa, cellules K-562 IHC : tissu de cancer du foie humain, |
| Spécificité de l'espèce: | Humain | | |

Remarque-IHC: il est suggéré de démasquer l'antigène avec un tampon de TE buffer pH 9.0; (*) À défaut, 'le démasquage de l'antigène peut être effectué avec un tampon citrate pH 6,0.

Informations générales

RAB20 is a member of RAS oncogene family, it has no close relationship to any other members of RAB subfamily which consists of small GTP-binding proteins involved in the regulation of intracellular vesicular transport. Firstly found highly expressed on the apical side of kidney tubule epithelial cells, RAB20 was speculated to be involved in apical endocytosis and recycling processes. So far, its function is not well known, however, RAB20 is recently found higher expressed in pancreatic adenocarcinomas than normal pancreas, which is proved by WB and IHC analyses, suggesting its promising role in diagnosis of pancreatic carcinogenesis. Catalog#11616-1-AP is a rabbit polyclonal antibody raised against full-length of human RAB20.

Stockage

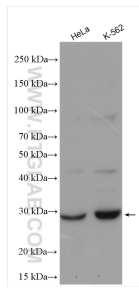
Stockage:
Stocker à -20°C. Stable pendant un an après l'expédition.
Tampon de stockage:
PBS avec azote de sodium à 0,02 % et glycérol à 50 % pH 7,3
L'aliquotage n'est pas nécessaire pour le stockage à -20C

*** Les 20ul contiennent 0,1% de BSA.

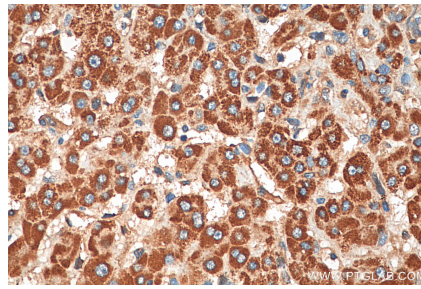
For technical support and original validation data for this product please contact:
T: 1 (888) 4PTGLAB (1-888-478-4522) (toll free in USA), or 1(312) 455-8498 (outside USA)
E: proteintech@ptglab.com
W: ptglab.com

This product is exclusively available under Proteintech Group brand and is not available to purchase from any other manufacturer.

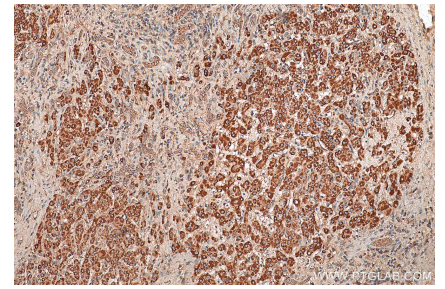
Données de validation sélectionnées



Various lysates were subjected to SDS PAGE followed by western blot with 29110-1-AP (RAB20 antibody) at dilution of 1:1000 incubated at room temperature for 1.5 hours.



Immunohistochemical analysis of paraffin-embedded human liver cancer tissue slide using 29110-1-AP (RAB20 antibody) at dilution of 1:200 (under 40x lens). Heat mediated antigen retrieval with Tris-EDTA buffer (pH 9.0).



Immunohistochemical analysis of paraffin-embedded human liver cancer tissue slide using 29110-1-AP (RAB20 antibody) at dilution of 1:200 (under 10x lens). Heat mediated antigen retrieval with Tris-EDTA buffer (pH 9.0).