

À des fins de recherche uniquement

# Anticorps Polyclonal de lapin anti-MMP14 / MT1-MMP



Numéro de catalogue: 29111-1-AP

1 Publications

## Informations de base

Numéro de catalogue: 29111-1-AP	Numéro d'acquisition GenBank: BC064803	Méthode de purification: Purification par affinité contre l'antigène
Taille: 150ul , Concentration: 400 µg/ml by Nanodrop;	Identification du gène (NCBI): 4323	Dilutions recommandées: WB 1:500-1:1000 IHC 1:50-1:500 IF 1:50-1:500
Hôte: Lapin	Nom complet: matrix metallopeptidase 14 (membrane-inserted)	
Isotype: IgG	MW calculé: 66 kDa	
Immunogen Catalog Number: AG30755	MW observés: 66-70 kDa	

## Applications

Applications testées: IF, IHC, WB, ELISA	Contrôles positifs: WB : cellules A549, IHC : tissu de cancer du côlon humain, IF : cellules A549,
Demandes citées: WB	
Spécificité de l'espèce: Humain, souris	
Espèces citées: Humain, souris	

**Remarque-IHC: il est suggéré de démasquer l'antigène avec un tampon de TE buffer pH 9,0; (\*) À défaut, 'le démasquage de l'antigène peut être 'effectué avec un tampon citrate pH 6,0.**

## Informations générales

MMP14, also named as MT1-MMP, is a key matrix metalloproteinase (MMP) family member which plays a crucial role in tumor growth, invasion and metastasis. MT1-MMP is a cell membrane-bound proteinase, and it enhances degradation of collagen IV, a major component of the basement membrane, by forming a complex with tissue inhibitor of metalloproteinase-2 (TIMP-2) to activate pro-MMP-2. MT1-MMP can influence venous invasion, intrahepatic metastasis, and patient outcome in hepatocellular carcinoma (HCC). MT1-MMP was reported to be present in centromere and could lead to chromosome instability in MDCK cells, indicating that MT1-MMP may have more novel functions in the intracellular compartments. In western blotting, pro-MMP14 (65 kDa) and MMP14 (51 kDa) bands showed with the truncated MMP14 (45, 42, 35, 20 kDa) forms (PMID:12097451).

## Publications notables

Autrice	Pubmed ID	Journal	Application
Dongdong Zheng	36382024	Bioact Mater	WB

## Stockage

Stockage:  
Stocker à -20°C. Stable pendant un an après l'expédition.  
Tampon de stockage:  
PBS avec azoture de sodium à 0,02 % et glycérol à 50 % pH 7,3  
L'aliquotage n'est pas nécessaire pour le stockage à -20C

\*\*\* Les 20ul contiennent 0,1% de BSA.

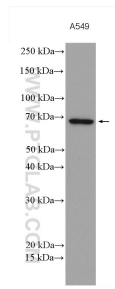
For technical support and original validation data for this product please contact:

T: 1 (888) 4PTGLAB (1-888-478-4522) (toll free in USA), or 1(312) 455-8498 (outside USA)

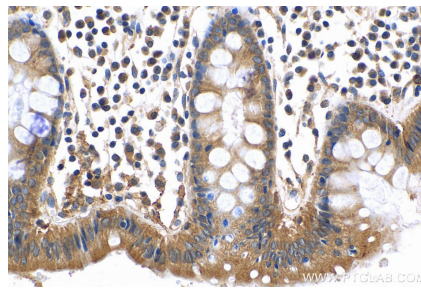
E: proteintech@ptglab.com  
W: ptglab.com

This product is exclusively available under Proteintech Group brand and is not available to purchase from any other manufacturer.

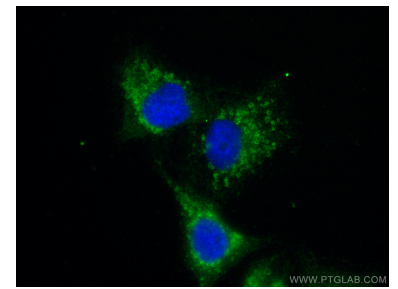
## Données de validation sélectionnées



A549 cells were subjected to SDS PAGE followed by western blot with 29111-1-AP (MMP14 antibody) at dilution of 1:600 incubated at room temperature for 1.5 hours.



Immunohistochemical analysis of paraffin-embedded human colon cancer tissue slide using 29111-1-AP (MMP14 antibody) at dilution of 1:200 (under 10x Lens). Heat mediated antigen retrieval with Tris-EDTA buffer (pH 9.0).



Immunofluorescent analysis of (-20°C Ethanol) fixed A549 cells using MMP14 antibody (29111-1-AP) at dilution of 1:200 and CoraLite®488-Conjugated AffiniPure Goat Anti-Rabbit IgG(H+L).