

À des fins de recherche uniquement

# Anticorps Polyclonal de lapin anti-Phospho-PKC Alpha (Thr638)



Numéro de catalogue: 29123-1-AP

3 Publications

## Informations de base

Numéro de catalogue:

29123-1-AP

Taille:

100ul, Concentration: 240 µg/ml by Nanodrop;

Hôte:

Lapin

Isotype:

IgG

Numéro d'acquisition GenBank:

AK055431

Identification du gène (NCBI):

5578

Nom complet:

protein kinase C, alpha

MW calculé

77 kDa

MW observés:

77 kDa

Méthode de purification:

Purification par affinité contre l'antigène

Dilutions recommandées:

WB 1:2000-1:10000

## Applications

Applications testées:

WB, ELISA

Demandes citées:

WB

Spécificité de l'espèce:

Humain, souris

Espèces citées:

Humain, souris

Contrôles positifs:

WB : cellules NIH/3T3 traitées à la λ phosphatase, PMA treated HL-60 cells

## Informations générales

PKCs are a family of serine/threonine kinases involved in various processes in cells including proliferation, differentiation, cell survival, and apoptosis. PKC family is composed of three different subgroups: conventional (cPKC), the novel (nPKC) and atypical (aPKC). PKC $\alpha$ ,  $\beta$ 1,  $\beta$ 2, and  $\gamma$  belong to cPKC, PKC $\delta$ ,  $\epsilon$ ,  $\eta$  and  $\theta$  are nPKC, whereas aPKC comprises of PKC $\zeta$  and  $\lambda$ /1. All PKCs consist of the N-terminal regulatory region and C-terminal catalytic region (kinase domain). PKCs are physiologically activated by various extracellular signals transduced by hormones, growth factors, cytokines or antigens. The presence of activated PKCs on internal membranes leads to the phosphorylation of various interacting proteins. (PMID: 32466765, PMID: 12417016)

## Publications notables

Autrice	Pubmed ID	Journal	Application
Yuwei Wu	37232941	J Leukoc Biol	WB
Jing Ren	36999945	Cancer Med	WB
Qiong Wang	36925031	Chem Biol Interact	WB

## Stockage

Stockage:

Stocker à -20°C. Stable pendant un an après l'expédition.

Tampon de stockage:

PBS avec azoture de sodium à 0,02 % et glycérol à 50 % pH 7,3

L'aliquotage n'est pas nécessaire pour le stockage à -20C

\*\*\* Les 20ul contiennent 0,1% de BSA.

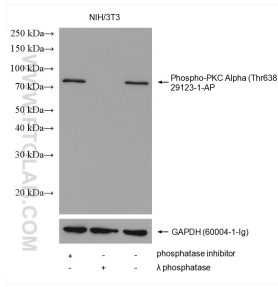
For technical support and original validation data for this product please contact:

T: 1 (888) 4PTGLAB (1-888-478-4522) (toll free in USA), or 1(312) 455-8498 (outside USA)

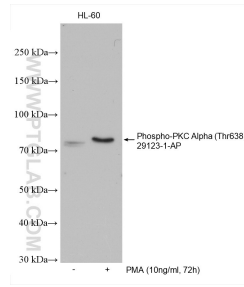
E: [proteintech@ptglab.com](mailto:proteintech@ptglab.com)  
W: [ptglab.com](http://ptglab.com)

This product is exclusively available under Proteintech Group brand and is not available to purchase from any other manufacturer.

## Données de validation sélectionnées



Non-treated NIH/3T3, phosphatase inhibitor treated and λ phosphatase treated NIH/3T3 cells were subjected to SDS PAGE followed by western blot with 29123-1-AP (Phospho-PKC Alpha (Thr638) antibody) at dilution of 1:5000 incubated at room temperature for 1 hours. The membrane was stripped and re-blotted with GAPDH antibody as loading control.



Non-treated and PMA treated HL-60 cells were subjected to SDS PAGE followed by western blot with 29123-1-AP (Phospho-PKC Alpha (Thr638) antibody) at dilution of 1:5000 incubated at room temperature for 1.5 hours.