

À des fins de recherche uniquement

Anticorps Polyclonal de lapin anti-Serotonin transporter



Numéro de catalogue: 29186-1-AP

Informations de base

Numéro de catalogue: 29186-1-AP	Numéro d'acquisition GenBank: NM_001045	Méthode de purification: Purification par affinité contre l'antigène
Taille: 150ul , Concentration: 550 µg/ml by Nanodrop;	Identification du gène (NCBI): 6532	Dilutions recommandées: WB 1:500-1:2000
Hôte: Lapin	Nom complet: solute carrier family 6 (neurotransmitter transporter, serotonin), member 4	
Isotype: IgG	MW calculé 70 aa	
Immunogen Catalog Number: AG30412	MW observés: 70 kDa	

Applications

Applications testées: WB, ELISA	Contrôles positifs: WB : cellules SH-SY5Y, cellules RAW 264.7
Spécificité de l'espèce: Humain, souris	

Informations générales

Serotonin transporter (SERT; SLC6A4) belongs to the sodium- and chloride-dependent monoamine transporter family. SERT is a membrane transporter that terminates the neurotransmission of serotonin, a monoaminergic neurotransmitter, through its reuptake. The SERT uptake mechanism acquires energy for active transport via ATP hydrolysis or via movement against electrochemical gradients. As an oligomeric N-glycan, SERT contains disulfide bonds between cysteine residues on the second extracellular domain. Post-translational modifications regulate the uptake kinetics and membrane trafficking of SERT, in part by regulating the proper folding and assembly of SERT in a host-dependent manner (PMID: 30394319).

Stockage

Stockage:
Stocker à -20°C. Stable pendant un an après l'expédition.
Tampon de stockage:
PBS avec azoture de sodium à 0,02 % et glycérol à 50 % pH 7,3
L'aliquotage n'est pas nécessaire pour le stockage à -20C

***** Les 20ul contiennent 0,1% de BSA.**

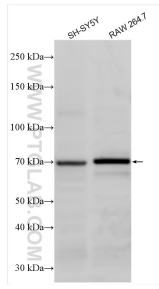
For technical support and original validation data for this product please contact:

T: 1 (888) 4PTGLAB (1-888-478-4522) (toll free in USA), or 1(312) 455-8498 (outside USA)

E: proteintech@ptglab.com
W: ptglab.com

This product is exclusively available under Proteintech Group brand and is not available to purchase from any other manufacturer.

Données de validation sélectionnées



Various lysates were subjected to SDS PAGE followed by western blot with 29186-1-AP (Serotonin transporter antibody) at dilution of 1:1000 incubated at room temperature for 1.5 hours.