

À des fins de recherche uniquement

# Anticorps Polyclonal de lapin anti-Di-Methyl-Histone H3 (Lys36)



Numéro de catalogue: 29202-1-AP

## Informations de base

Numéro de catalogue:

29202-1-AP

Taille:

100ul , Concentration: 300 µg/ml by Nanodrop;

Hôte:

Lapin

Isotype:

IgG

Numéro d'acquisition GenBank:

BC066245

Identification du gène (NCBI):

8350

Nom complet:

histone cluster 1, H3a

MW observés:

15-18 kDa

Méthode de purification:

Purification par affinité contre l'antigène

Dilutions recommandées:

WB 1:1000-1:8000

ELISA 1:32000-1:128000

## Applications

Applications testées:

WB, ELISA

Spécificité de l'espèce:

Humain, rat, souris

Contrôles positifs:

WB : cellules C2C12, cellules HEK-293T, cellules HeLa, cellules HepG2, cellules HSC-T6, cellules THP-1

ELISA : Peptide,

## Informations générales

Histones, including H1/H5 (linker histones), H2, H3, and H4 (core histones), are nucleic proteins which interact with DNA to form the nucleosomes and play important roles in gene regulation and DNA replication. Histone proteins are highly post-translationally modified while Histone H3 is the most extensively modified. The NSD family histone methyltransferases, including NSD1, NSD2 and NSD3, play crucial roles in chromatin regulation and are implicated in oncogenesis (PMID: 33361816). NSD enzymes exhibit an auto-inhibitory state that is relieved by nucleosome engagement, allowing for H3K36 di-methylation catalysis (PMID: 22099308).

## Stockage

Stockage:

Stocker à -20 °C

Tampon de stockage:

PBS avec azote de sodium à 0,02 % et glycérol à 50 % pH 7,3

L'aliquotage n'est pas nécessaire pour le stockage à -20C

\*\*\* Les 20ul contiennent 0,1% de BSA.

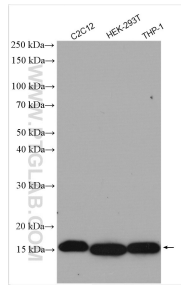
For technical support and original validation data for this product please contact:

T: 1 (888) 4PTGLAB (1-888-478-4522) (toll free in USA), or 1(312) 455-8498 (outside USA)

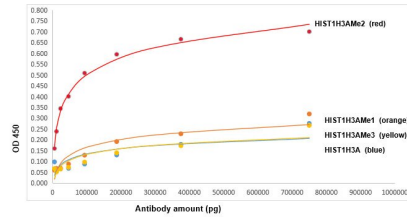
E: proteintech@ptglab.com  
W: ptglab.com

This product is exclusively available under Proteintech Group brand and is not available to purchase from any other manufacturer.

## Données de validation sélectionnées



Various lysates were subjected to SDS PAGE followed by western blot with 29202-1-AP (HIST1H3A antibody) at dilution of 1:4000 incubated at room temperature for 1.5 hours.



Di-Methyl-Histone H3(Lys36) antibody (29202-1-AP) tested by ELISA. HIST1H3A(31-43aa), HIST1H3AMe1(31-43aa), HIST1H3AMe2(31-43aa), HIST1H3AMe3(31-43aa) were coated onto microtiter plates at 0.15 µg/well and then incubated with a dilution series of HIST1H3AMe2 antibody (29202-1-AP). Bound antibodies were detected with HRP conjugated anti-rabbit IgG followed by incubation with HRP substrate and then measuring the resulting absorbance at 450