

À des fins de recherche uniquement

Anticorps Polyclonal de lapin anti- PKC Gamma



Numéro de catalogue: 29208-1-AP

1 Publications

Informations de base

| | | |
|--|---|--|
| Numéro de catalogue: 29208-1-AP | Numéro d'acquisition GenBank: BC047876 | Méthode de purification: Purification par affinité contre l'antigène |
| Taille: 150ul , Concentration: 1000 µg/ml by Nanodrop; | Identification du gène (NCBI): 5582 | Dilutions recommandées: WB 1:1000-1:4000 IHC 1:50-1:500 |
| Hôte: Lapin | Nom complet: protein kinase C, gamma | |
| Isotype: IgG | MW calculé 78 kDa | |
| Immunogen Catalog Number: AG25085 | MW observés: 78 kDa | |

Applications

| | |
|---|---|
| Applications testées: IHC, WB, ELISA | Contrôles positifs: WB : tissu cérébral de souris, tissu cérébral de rat IHC : tissu de cervelet de souris, |
| Demandes citées: WB | |
| Spécificité de l'espèce: Humain, rat, souris | |
| Espèces citées: souris | |

Remarque-IHC: il est suggéré de démasquer l'antigène avec un tampon de TE buffer pH 9,0; (*) À défaut, le démasquage de l'antigène peut être effectué avec un tampon citrate pH 6,0.

Informations générales

Protein kinase C (PKC) is a family of serine- and threonine-specific protein kinases that can be activated by calcium and second messenger diacylglycerol. PKC family members phosphorylate a wide variety of protein targets and are known to be involved in diverse cellular signaling pathways. PKC gamma is a neuron-specific member of the classical PKCs and is activated and translocated to subcellular regions as a result of various stimuli, including diacylglycerol synthesis, increased intracellular Ca(2+) and phorbol esters. Defects in this protein have been associated with spinocerebellar ataxia type 14 (SCA14), an autosomal dominant neurodegenerative disease.

Publications notables

| Autrice | Pubmed ID | Journal | Application |
|----------|-----------|--------------|-------------|
| Jing Dai | 36627245 | Cereb Cortex | WB |

Stockage

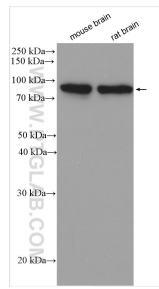
Stockage:
Stocker à -20 °C.
Tampon de stockage:
PBS avec azoture de sodium à 0,02 % et glycérol à 50 % pH 7,3
L'aliquotage n'est pas nécessaire pour le stockage à -20C

*** Les 20ul contiennent 0,1% de BSA.

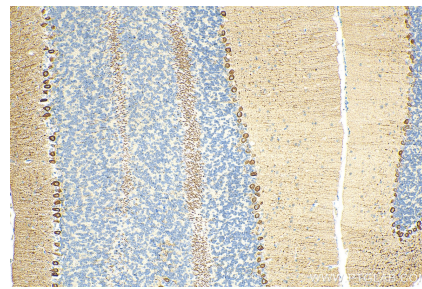
For technical support and original validation data for this product please contact:
T: 1 (888) 4PTGLAB (1-888-478-4522) (toll free in USA), or 1(312) 455-8498 (outside USA)
E: proteintech@ptglab.com
W: ptglab.com

This product is exclusively available under Proteintech Group brand and is not available to purchase from any other manufacturer.

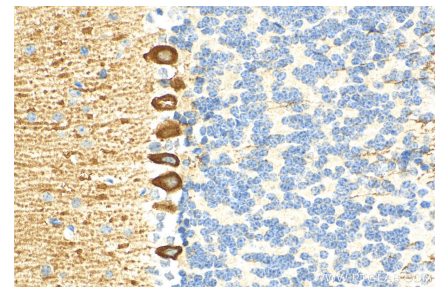
Données de validation sélectionnées



Various lysates were subjected to SDS PAGE followed by western blot with 29208-1-AP (PKC Gamma antibody) at dilution of 1:2000 incubated at room temperature for 1.5 hours.



Immunohistochemical analysis of paraffin-embedded mouse cerebellum tissue slide using 29208-1-AP (PKC Gamma antibody) at dilution of 1:200 (under 10x lens). Heat mediated antigen retrieval with Tris-EDTA buffer (pH 9.0).



Immunohistochemical analysis of paraffin-embedded mouse cerebellum tissue slide using 29208-1-AP (PKC Gamma antibody) at dilution of 1:200 (under 40x lens). Heat mediated antigen retrieval with Tris-EDTA buffer (pH 9.0).