

À des fins de recherche uniquement

# Anticorps Polyclonal de lapin anti-Phospho-S6 Ribosomal protein (Ser235/236)



Numéro de catalogue: 29223-1-AP

3 Publications

## Informations de base

Numéro de catalogue:  
29223-1-AP

Taille:  
100ul , Concentration: 450 µg/ml by  
Nanodrop;

Hôte:  
Lapin

Isotype:  
IgG

Numéro d'acquisition GenBank:  
BC000524

Identification du gène (NCBI):  
6194

Nom complet:  
ribosomal protein S6

MW calculé  
29 kDa

MW observés:  
32 kDa

Méthode de purification:  
Purification par affinité contre  
l'antigène

Dilutions recommandées:  
WB 1:1000-1:4000

## Applications

Applications testées:  
WB, ELISA

Demandes citées:  
WB

Spécificité de l'espèce:  
Humain, souris

Espèces citées:  
Humain

Contrôles positifs:

WB : cellules NIH/3T3 traitées au PDGF, cellules  
NIH/3T3 traitées à la λ phosphatase

## Informations générales

Ribosomal protein S6 (RPS6), Phosphoprotein NP33. It may play an important role in controlling cell growth and proliferation through the selective translation of particular classes of mRNA. Ribosomal protein S6 is the major substrate of protein kinases in eukaryote ribosomes. The phosphorylation is stimulated by growth factors, tumor promoting agents, and mitogens. It is dephosphorylated at growth arrest. Phosphorylated at Ser-235 and Ser-236 by RPS6KA1 and RPS6KA3; phosphorylation at these sites facilitates the assembly of the preinitiation complex.

## Publications notables

Autrice	Pubmed ID	Journal	Application
Peng Du	34522186	Int J Med Sci	WB
Mengqi Liu	36144192	Metabolites	WB
Henan Qin	36880835	Aging (Albany NY)	WB

## Stockage

Stockage:

Stocker à -20°C. Stable pendant un an après l'expédition.

Tampon de stockage:

PBS avec azoture de sodium à 0,02 % et glycérol à 50 % pH 7,3

L'aliquotage n'est pas nécessaire pour le stockage à -20C

\*\*\* Les 20ul contiennent 0,1% de BSA.

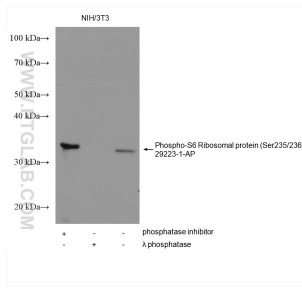
For technical support and original validation data for this product please contact:

T: 1 (888) 4PTGLAB (1-888-478-4522) (toll free  
in USA), or 1(312) 455-8498 (outside USA)

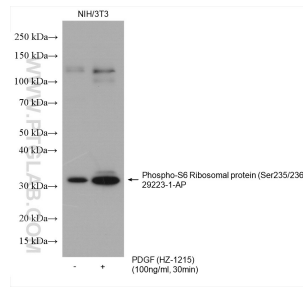
E: proteintech@ptglab.com  
W: ptglab.com

This product is exclusively available under Proteintech Group brand and is not available to purchase from any other manufacturer.

## Données de validation sélectionnées



Non-treated NIH/3T3, phosphatase inhibitor treated and  $\lambda$  phosphatase treated NIH/3T3 cells were subjected to SDS PAGE followed by western blot with 29223-1-AP (Phospho-S6 Ribosomal protein (Ser235/236) antibody) at dilution of 1:1000 incubated at room temperature for 1 hours.



Non-treated NIH/3T3 and PDGF (HZ-1215) treated NIH/3T3 cells were subjected to SDS PAGE followed by western blot with 29223-1-AP (Phospho-S6 Ribosomal protein (Ser235/236) antibody) at dilution of 1:2000 incubated at room temperature for 1.5 hours.