

À des fins de recherche uniquement

Anticorps Polyclonal de lapin anti-Phospho-RPS6KA1 (Thr359/Ser363)



Numéro de catalogue: 29225-1-AP

Informations de base

Numéro de catalogue:

29225-1-AP

Taille:

100ul, Concentration: 200 µg/ml by Nanodrop;

Hôte:

Lapin

Isotype:

IgG

Numéro d'acquisition GenBank:

BC014966

Identification du gène (NCBI):

6195

Nom complet:

ribosomal protein S6 kinase, 90kDa, polypeptide 1

MW calculé

735 aa, 83 kDa

MW observés:

83-90 kDa

Méthode de purification:

Purification par affinité contre l'antigène

Dilutions recommandées:

WB 1:1000-1:6000

Applications

Applications testées:

WB, ELISA

Spécificité de l'espèce:

Humain, souris

Contrôles positifs:

WB : cellules NIH/3T3 traitées à la λ phosphatase, cellules NIH/3T3 traitées au PDGF

Informations générales

The 90 kDa ribosomal S6 kinases (RSK1-4) are a family of widely expressed serine/threonine kinases and play an important role in the MAPK signaling cascade and act downstream of ERK1/2 signaling. It can mediate mitogenic and stress-induced activation of the transcription factors CREB1, ETV1/ER81 and NR4A1/NUR77. RSK1 (RPS6KA1) is also designated as p90RSK associated with cellular proliferation, survival and differentiation. RPS6KA1 has some phosphorylation sites including Ser380, Thr359 and Ser363 which are important for kinase activation. (PMID: 16458888, 30813401, 17259979, 10679322)

Stockage

Stockage:

Stocker à -20 °C

Tampon de stockage:

PBS avec azoture de sodium à 0,02 % et glycérol à 50 % pH 7,3, et BSA à 0,05 %.

L'aliquotage n'est pas nécessaire pour le stockage à -20C

*** Les 20ul contiennent 0,1% de BSA.

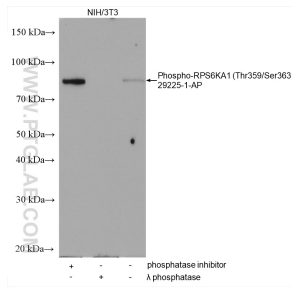
For technical support and original validation data for this product please contact:

T: 1 (888) 4PTGLAB (1-888-478-4522) (toll free in USA), or 1(312) 455-8498 (outside USA)

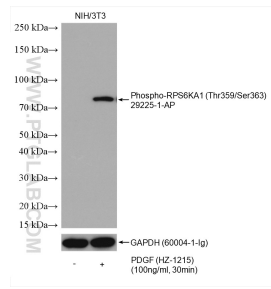
E: proteintech@ptglab.com
W: ptglab.com

This product is exclusively available under Proteintech Group brand and is not available to purchase from any other manufacturer.

Données de validation sélectionnées



Non-treated NIH/3T3, phosphatase inhibitor treated and λ phosphatase treated NIH/3T3 cells were subjected to SDS PAGE followed by western blot with 29225-1-AP (Phospho-RPS6KA1 (Thr359/Ser363) antibody) at dilution of 1:3000 incubated at 4°C overnight.



Non-treated NIH/3T3 and PDGF (HZ-1215) treated NIH/3T3 cells were subjected to SDS PAGE followed by western blot with 29225-1-AP (Phospho-RPS6KA1 (Thr359/Ser363) antibody) at dilution of 1:2000 incubated at 4°C overnight. The membrane was stripped and re-blotted with GAPDH antibody as loading control.