

À des fins de recherche uniquement

# Anticorps Polyclonal de lapin anti- PPP2R2B/A/C/D



Numéro de catalogue: 29237-1-AP

## Informations de base

<b>Numéro de catalogue:</b> 29237-1-AP	<b>Numéro d'acquisition GenBank:</b> BC031790	<b>Méthode de purification:</b> Purification par affinité contre l'antigène
<b>Taille:</b> 150ul , Concentration: 600 µg/ml by Nanodrop;	<b>Identification du gène (NCBI):</b> 5521	<b>Dilutions recommandées:</b> WB 1:1000-1:6000
<b>Hôte:</b> Lapin	<b>Nom complet:</b> protein phosphatase 2 (formerly 2A), regulatory subunit B, beta isoform	
<b>Isotype:</b> IgG	<b>MW calculé</b> 443 aa, 52 kDa	
<b>Immunogen Catalog Number:</b> AG30757	<b>MW observés:</b> 52 kDa	

## Applications

<b>Applications testées:</b> WB, ELISA	<b>Contrôles positifs:</b> WB : cellules HepG2, cellules MCF-7, tissu cérébral de rat, tissu cérébral de souris
<b>Spécificité de l'espèce:</b> Humain, rat, souris	

## Informations générales

The PPP2R2B gene encodes a deduced 443 amino acid protein of approximately 52 kDa, which is a brain-specific regulatory subunit B of protein phosphatase 2. PPP2R2B is a Subunit of PP2A, a highly conserved constitutive enzyme (PMID:11719278). PPP2R2B (Bβ) is an important regulator of protein phosphatase 2A (PP2A) activity in the brain. Through differential promoter usage and alternative splicing, two major isoforms Bβ1 and Bβ2 with divergent sub-cellular targeting N termini are produced. Bβ plays an important role in neuronal survival. It has 5 isoforms produced by alternative splicing. The antibody cross-reacts with PPP2R2A, PPP2R2C, and PPP2R2D due to high immunogen homology between PPP2R2B and PPP2R2A, PPP2R2C, and PPP2R2D.

## Stockage

**Stockage:**  
Stocker à -20°C. Stable pendant un an après l'expédition.  
**Tampon de stockage:**  
PBS avec azoture de sodium à 0,02 % et glycérol à 50 % pH 7,3  
L'aliquotage n'est pas nécessaire pour le stockage à -20C

**\*\*\* Les 20ul contiennent 0,1% de BSA.**

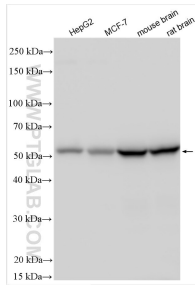
For technical support and original validation data for this product please contact:

T: 1 (888) 4PTGLAB (1-888-478-4522) (toll free in USA), or 1(312) 455-8498 (outside USA)

E: [proteintech@ptglab.com](mailto:proteintech@ptglab.com)  
W: [ptglab.com](http://ptglab.com)

**This product is exclusively available under Proteintech Group brand and is not available to purchase from any other manufacturer.**

## Données de validation sélectionnées



Various lysates were subjected to SDS PAGE followed by western blot with 29237-1-AP (PPP2R2B/A/C/D antibody) at dilution of 1:3000 incubated at room temperature for 1.5 hours.