

À des fins de recherche uniquement

Anticorps Polyclonal de lapin anti-Nestin



Numéro de catalogue: 29285-1-AP

Informations de base

Numéro de catalogue: 29285-1-AP	Numéro d'acquisition GenBank: NM_006617	Méthode de purification: Purification par affinité contre l'antigène
Taille: 150ul , Concentration: 900 µg/ml by Nanodrop;	Identification du gène (NCBI): 10763	Dilutions recommandées: WB 1:500-1:1000 IHC 1:50-1:500 IF 1:50-1:500
Hôte: Lapin	Nom complet: nestin	
Isotype: IgG	MW calculé 177 kDa	
Immunogen Catalog Number: AG29865	MW observés: 240-280 kDa	

Applications

Applications testées:

IF, IHC, WB, ELISA

Spécificité de l'espèce:

Humain, rat, souris

Remarque-IHC: il est suggéré de démasquer l'antigène avec un tampon de TE buffer pH 9,0; (*) À défaut, 'le démasquage de l'antigène peut être effectué avec un tampon citrate pH 6,0.

Contrôles positifs:

WB : cellules SGC-7901, cellules MG U-87, cellules U-251

IHC : tissu cérébral de rat, tissu cérébral de souris

IF : tissu cérébral de rat, tissu rénal de souris, tissu rénal humain

Informations générales

Nestin, also named as NES and Nbla00170, is a class VI intermediate filament protein expressed in stem cells of the central nervous system (CNS) but not in mature CNS cells. Its expression is used extensively as a marker for neural lineage cells derived from human embryonic stem (hES) and induced pluripotent stem (iPS) cells. Nestin is also expressed in non-neural stem cell populations such as pancreatic islet progenitors and hematopoietic progenitors. Nestin can be detected as 220-240 kDa and 240-280 kDa. Studies point toward nestin heavy posttranslational modifications as possibly serving particular functions in podocytes and in a few other particular cell types (PMID: 17210924).

Stockage

Stockage:

Stocker à -20°C. Stable pendant un an après l'expédition.

Tampon de stockage:

PBS avec azoture de sodium à 0,02 % et glycérol à 50 % pH 7,3

L'aliquotage n'est pas nécessaire pour le stockage à -20C

*** Les 20ul contiennent 0,1% de BSA.

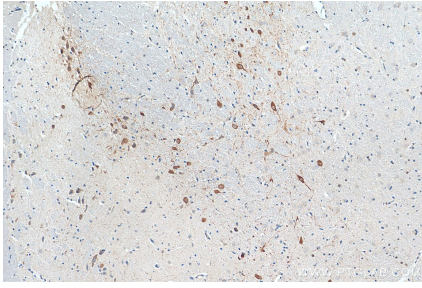
For technical support and original validation data for this product please contact:

T: 1 (888) 4PTGLAB (1-888-478-4522) (toll free in USA), or 1(312) 455-8498 (outside USA)

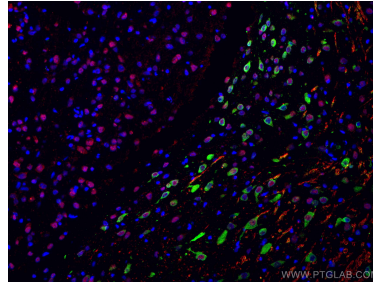
E: proteintech@ptglab.com
W: ptglab.com

This product is exclusively available under Proteintech Group brand and is not available to purchase from any other manufacturer.

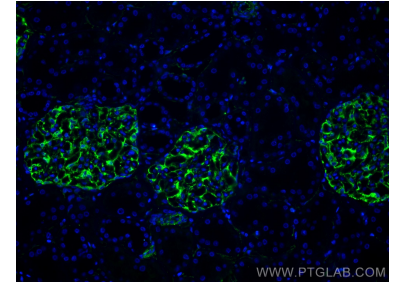
Données de validation sélectionnées



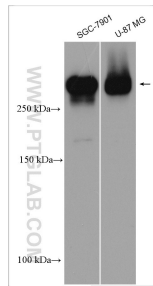
Immunohistochemical analysis of paraffin-embedded rat brain tissue slide using 29285-1-AP (nestin antibody) at dilution of 1:200 (under 10x lens). Heat mediated antigen retrieval with Tris-EDTA buffer (pH 9.0).



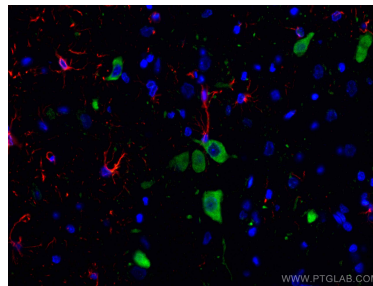
Immunofluorescent analysis of (4% PFA) fixed rat brain tissue using nestin antibody (29285-1-AP) at dilution of 1:200 and CoraLite@488-Conjugated AffiniPure Goat Anti-Rabbit IgG(H+L), Neul antibody (66836-1-Ig, Clone: 3A4C1, red).



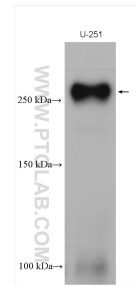
Immunofluorescent analysis of (4% PFA) fixed human kidney tissue using Nestin antibody (29285-1-AP) at dilution of 1:200 and CoraLite@488-Conjugated AffiniPure Goat Anti-Rabbit IgG(H+L).



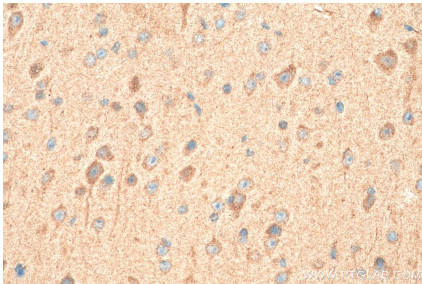
Various lysates were subjected to SDS PAGE followed by western blot with 29285-1-AP (nestin antibody) at dilution of 1:500 incubated at room temperature for 1.5 hours.



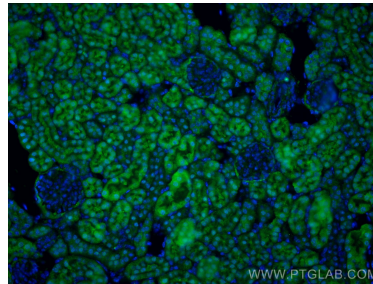
Immunofluorescent analysis of (4% PFA) fixed rat brain tissue using nestin antibody (29285-1-AP) at dilution of 1:200 and CoraLite@488-Conjugated AffiniPure Goat Anti-Rabbit IgG(H+L), GFAP antibody (60190-1-Ig, Clone: 4B2E10, red).



U-251 cells were subjected to SDS PAGE followed by western blot with 29285-1-AP (nestin antibody) at dilution of 1:600 incubated at room temperature for 1.5 hours.



Immunohistochemical analysis of paraffin-embedded mouse brain tissue slide using 29285-1-AP (Nestin antibody) at dilution of 1:200 (under 40x lens). Heat mediated antigen retrieval with Tris-EDTA buffer (pH 9.0).



Immunofluorescent analysis of (4% PFA) fixed mouse kidney tissue using Nestin antibody (29285-1-AP) at dilution of 1:200 and CoraLite@488-Conjugated AffiniPure Goat Anti-Rabbit IgG(H+L).