

À des fins de recherche uniquement

# Anticorps Polyclonal de lapin anti-DLK1



Numéro de catalogue: 29288-1-AP

## Informations de base

Numéro de catalogue: 29288-1-AP	Numéro d'acquisition GenBank: BC007741	Méthode de purification: Purification par affinité contre l'antigène
Taille: 150ul , Concentration: 300 µg/ml by Nanodrop;	Identification du gène (NCBI): 8788	Dilutions recommandées: WB 1:500-1:3000 IHC 1:50-1:500
Hôte: Lapin	Nom complet: delta-like 1 homolog (Drosophila)	
Isotype: IgG	MW calculé 41 kDa	
Immunogen Catalog Number: AG30916	MW observés: 60 kDa	

## Applications

### Applications testées:

IHC, WB, ELISA

### Spécificité de l'espèce:

Humain, rat, souris

### Contrôles positifs:

WB : tissu cérébral de souris, tissu cérébral de rat

IHC : tissu placentaire humain,

**Remarque-IHC: il est suggéré de démasquer l'antigène avec un tampon de TE buffer pH 9,0; (\*) À défaut, 'le démasquage de l'antigène peut être 'effectué avec un tampon citrate pH 6,0.**

## Informations générales

DLK1, also named PREF1, FA1, or pG2, is a transmembrane protein belonging to the epidermal growth factor (EGF)-like superfamily (PMID: 8095043). It contains six EGF-like repeats in the extracellular region. DLK1 is abundant in preadipocytes and regulate adipocyte differentiation negatively (PMID: 8500166). Deficiency of DLK1 gives rise to growth retardation and accelerated adiposity in mouse model. Expression of DLK1 is found in tumors with neuroendocrine features that implies DLK1 may be involved in neuroendocrine differentiation (PMID: 8095043). It has been reported overexpression of DLK1 could lead to the development of metabolic abnormalities by impairment of adipocyte function in mice (PMID: 12588883). The gene of DLK1 maps to chromosome 14q32, and encodes a 383-amino acid protein with a calculated molecular mass of 41 kDa. In preadipocytes, multiple discrete forms of DLK1 protein of 45-60 kDa are present, owing in part to N-linked glycosylation (PMID: 8500166).

## Stockage

### Stockage:

Stocker à -20 °C.

### Tampon de stockage:

PBS avec azoture de sodium à 0,02 % et glycérol à 50 % pH 7,3

L'aliquotage n'est pas nécessaire pour le stockage à -20C

**\*\*\* Les 20ul contiennent 0,1% de BSA.**

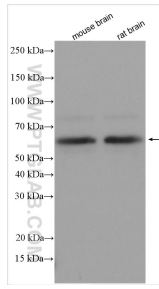
For technical support and original validation data for this product please contact:

T: 1 (888) 4PTGLAB (1-888-478-4522) (toll free in USA), or 1(312) 455-8498 (outside USA)

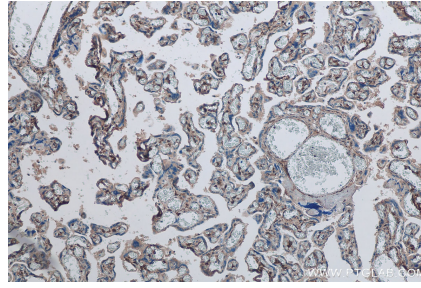
E: [proteintech@ptglab.com](mailto:proteintech@ptglab.com)  
W: [ptglab.com](http://ptglab.com)

**This product is exclusively available under Proteintech Group brand and is not available to purchase from any other manufacturer.**

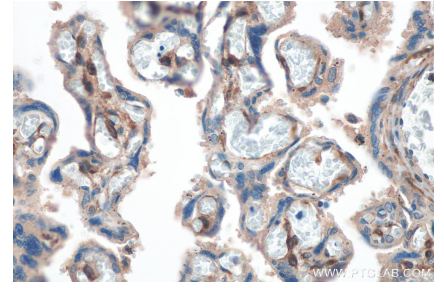
## Données de validation sélectionnées



Various lysates were subjected to SDS PAGE followed by western blot with 29288-1-AP (DLK1 antibody) at dilution of 1:1500 incubated at room temperature for 1.5 hours.



Immunohistochemical analysis of paraffin-embedded human placenta tissue slide using 29288-1-AP (DLK1 antibody) at dilution of 1:200 (under 10x lens). Heat mediated antigen retrieval with Tris-EDTA buffer (pH 9.0).



Immunohistochemical analysis of paraffin-embedded human placenta tissue slide using 29288-1-AP (DLK1 antibody) at dilution of 1:200 (under 40x lens). Heat mediated antigen retrieval with Tris-EDTA buffer (pH 9.0).