

À des fins de recherche uniquement

# Anticorps Polyclonal de lapin anti-SAP 97



Numéro de catalogue: 29292-1-AP

## Informations de base

|   |  |   |
|---|--|---|
| <b>Numéro de catalogue:</b><br>29292-1-AP                       | <b>Numéro d'acquisition GenBank:</b><br>NM_001098424       | <b>Méthode de purification:</b><br>Purification par affinité contre l'antigène          |
| <b>Taille:</b><br>150ul , Concentration: 950 µg/ml by Nanodrop; | <b>Identification du gène (NCBI):</b><br>1739              | <b>Dilutions recommandées:</b><br>WB 1:2000-1:12000<br>IHC 1:50-1:500<br>IF 1:200-1:800 |
| <b>Hôte:</b><br>Lapin   | <b>Nom complet:</b><br>discs, large homolog 1 (Drosophila) |   |
| <b>Isotype:</b><br>IgG  | <b>MW calculé:</b><br>100 kDa                              |   |
| <b>Immunogen Catalog Number:</b><br>AG31066                     | <b>MW observés:</b><br>100-130 kDa                         |   |

## Applications

|  |  |
|--|--|
| <b>Applications testées:</b><br>IF, IHC, WB, ELISA   | <b>Contrôles positifs:</b><br>WB : cellules HEK-293, cellules HUVEC          |
| <b>Spécificité de l'espèce:</b><br>Humain  | <b>IHC :</b> tissu de cancer du côlon humain, tissu de cancer du sein humain |
| <b>Remarque-IHC: il est suggéré de démasquer l'antigène avec un tampon de TE buffer pH 9,0; (*) À défaut, 'le démasquage de l'antigène peut être effectué avec un tampon citrate pH 6,0.</b> | <b>IF :</b> cellules HEK-293,  |

## Informations générales

DLG1, also named as SAP97, hDlg and DLGH1, belongs to the MAGUK family. It is essential multidomain scaffolding protein required for normal development. DLG1 may play a role in adherens junction assembly, signal transduction, cell proliferation, synaptogenesis and lymphocyte activation. It regulates the excitability of cardiac myocytes by modulating the functional expression of Kv4 channels. DLG1 is a functional regulator of Kv1.5 channel. The DLG1-MPP7 complex promotes epithelial cell polarity and tight junction formation. The antibody is specific to DLG1.

## Stockage

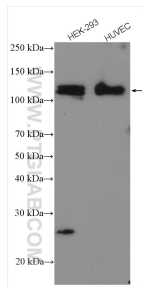
**Stockage:**  
Stocker à -20°C. Stable pendant un an après l'expédition.  
**Tampon de stockage:**  
PBS avec azote de sodium à 0,02 % et glycérol à 50 % pH 7,3  
L'aliquotage n'est pas nécessaire pour le stockage à -20C

\*\*\* Les 20ul contiennent 0,1% de BSA.

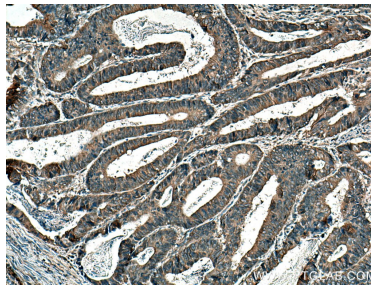
For technical support and original validation data for this product please contact:  
T: 1 (888) 4PTGLAB (1-888-478-4522) (toll free in USA), or 1(312) 455-8498 (outside USA) E: proteintech@ptglab.com W: ptglab.com

This product is exclusively available under Proteintech Group brand and is not available to purchase from any other manufacturer.

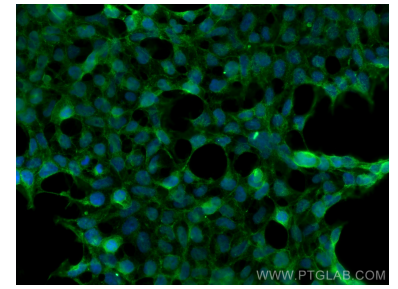
## Données de validation sélectionnées



Various lysates were subjected to SDS PAGE followed by western blot with 29292-1-AP (DLG1 antibody) at dilution of 1:6000 incubated at room temperature for 1.5 hours.



Immunohistochemical analysis of paraffin-embedded human colon cancer tissue slide using 29292-1-AP (DLG1 antibody) at dilution of 1:200 (under 10x lens). Heat mediated antigen retrieval with Tris-EDTA buffer (pH 9.0).



Immunofluorescent analysis of (4% PFA) fixed HEK-293 cells using SAP 97 antibody (29292-1-AP) at dilution of 1:200 and CoraLite@488-Conjugated AffiniPure Goat Anti-Rabbit IgG(H+L).