

À des fins de recherche uniquement

Anticorps Polyclonal de lapin anti-SPATA2



Numéro de catalogue: 29321-1-AP

Informations de base

Numéro de catalogue: 29321-1-AP	Numéro d'acquisition GenBank: BC009481	Méthode de purification: Purification par affinité contre l'antigène
Taille: 150ul , Concentration: 600 µg/ml by Nanodrop;	Identification du gène (NCBI): 9825	Dilutions recommandées: WB 1:2000-1:10000 IHC 1:50-1:500 IF 1:50-1:500
Hôte: Lapin	Nom complet: spermatogenesis associated 2	
Isotype: IgG	MW calculé 58 kDa	
Immunogen Catalog Number: AG30773	MW observés: 58-60 kDa	

Applications

Applications testées:
IF, IHC, WB, ELISA

Spécificité de l'espèce:
Humain, rat, souris

Remarque-IHC: il est suggéré de démasquer l'antigène avec un tampon de TE buffer pH 9,0; (*) À défaut, 'le démasquage de l'antigène peut être effectué avec un tampon citrate pH 6,0.

Contrôles positifs:

WB : tissu testiculaire de souris, tissu testiculaire de rat

IHC : tissu pulmonaire de souris,

IF : cellules HeLa,

Informations générales

The protein SPATA2 (spermatogenesis-associated protein 2) was initially shown to be highly expressed in testicular Sertoli cells, and these early reports suggested SPATA2 to play a role in spermatogenesis. More recently, it was discussed to be involved in the predisposition for psoriasis. SPATA2 is required for TNF-induced cell death. SPATA2 has a potential role during pancreatic development and β -cell proliferation.(PMID: 20119533/PMID: 27458237)

Stockage

Stockage:

Stocker à -20 °C

Tampon de stockage:

PBS avec azoture de sodium à 0,02 % et glycérol à 50 % pH 7,3

L'aliquotage n'est pas nécessaire pour le stockage à -20C

***** Les 20ul contiennent 0,1% de BSA.**

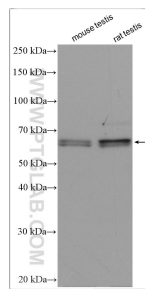
For technical support and original validation data for this product please contact:

T: 1 (888) 4PTGLAB (1-888-478-4522) (toll free in USA), or 1(312) 455-8498 (outside USA)

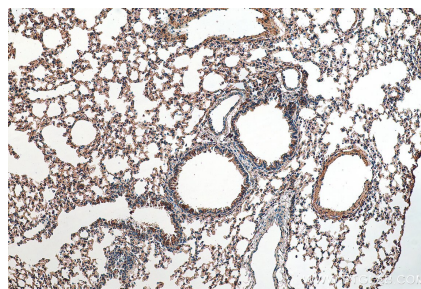
E: proteintech@ptglab.com
W: ptglab.com

This product is exclusively available under Proteintech Group brand and is not available to purchase from any other manufacturer.

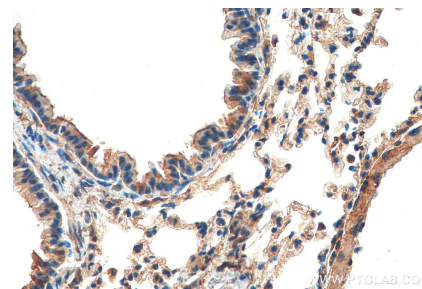
Données de validation sélectionnées



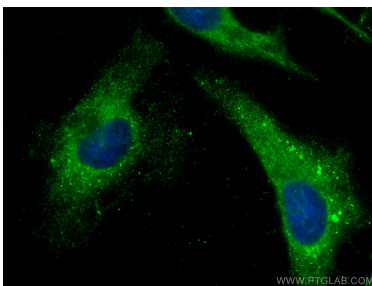
Various lysates were subjected to SDS PAGE followed by western blot with 29321-1-AP (SPATA2 antibody) at dilution of 1:5000 incubated at room temperature for 1.5 hours.



Immunohistochemical analysis of paraffin-embedded mouse lung tissue slide using 29321-1-AP (SPATA2 antibody) at dilution of 1:200 (under 10x lens). Heat mediated antigen retrieval with Tris-EDTA buffer (pH 9.0).



Immunohistochemical analysis of paraffin-embedded mouse lung tissue slide using 29321-1-AP (SPATA2 antibody) at dilution of 1:200 (under 40x lens). Heat mediated antigen retrieval with Tris-EDTA buffer (pH 9.0).



Immunofluorescent analysis of (-20°C Ethanol) fixed HeLa cells using SPATA2 antibody (29321-1-AP) at dilution of 1:200 and CoraLite®488-Conjugated AffiniPure Goat Anti-Rabbit IgG(H+L).