

À des fins de recherche uniquement

Anticorps Polyclonal de lapin anti-STK11/LKB1



Numéro de catalogue: 29323-1-AP

Phare

Informations de base

Numéro de catalogue:

29323-1-AP

Taille:

150ul, Concentration: 450 µg/ml by Nanodrop;

Hôte:

Lapin

Isotype:

IgG

Immunogen Catalog Number:

AG30903

Numéro d'acquisition GenBank:

BC007981

Identification du gène (NCBI):

6794

Nom complet:

serine/threonine kinase 11

MW calculé

49 kDa

MW observés:

50-55 kDa

Méthode de purification:

Purification par affinité contre l'antigène

Dilutions recommandées:

WB 1:2000-1:10000

IHC 1:300-1:1200

IF 1:50-1:500

Applications

Applications testées:

IF, IHC, WB, ELISA

Spécificité de l'espèce:

Humain, souris

Remarque-IHC: il est suggéré de démasquer l'antigène avec un tampon de TE buffer pH 9,0; (*) À défaut, 'le démasquage de l'antigène peut être effectué avec un tampon citrate pH 6,0.

Contrôles positifs:

WB : cellules A431, cellules HEK-293T, cellules MCF-7

IHC : tissu de cancer du poumon humain, tissu de cancer du sein humain, tissu de lymphome humain, tissu testiculaire de souris

IF : cellules HeLa,

Informations générales

STK11 (serine/threonine-protein kinase 11) is also named as LKB1, PJS, and belongs to the protein kinase superfamily. It controls the activity of AMP-activated protein kinase (AMPK) family members, thereby playing a role in various processes such as cell metabolism, cell polarity, apoptosis and DNA damage response. The tumour suppressor protein LKB1 is a serine/threonine kinase that has been causally linked to Peutz-Jeghers syndrome (PJS). Defects in STK11 are a cause of Peutz-Jeghers syndrome (PJS) and defects in STK11 have been associated with testicular germ cell tumor (TGCT) and some sporadic cancers, especially lung cancers. STK11 has 2 isoforms with MW of 49 kDa and 45 kDa, and can be detected as 50-54 kDa after posttranslational modification.

Stockage

Stockage:

Stocker à -20°C. Stable pendant un an après l'expédition.

Tampon de stockage:

PBS avec azotate de sodium à 0,02 % et glycérol à 50 % pH 7,3

L'aliquotage n'est pas nécessaire pour le stockage à -20C

*** Les 20ul contiennent 0,1% de BSA.

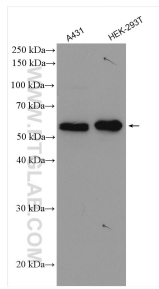
For technical support and original validation data for this product please contact:

T: 1 (888) 4PTGLAB (1-888-478-4522) (toll free in USA), or 1(312) 455-8498 (outside USA)

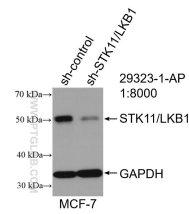
E: proteintech@ptglab.com
W: ptglab.com

This product is exclusively available under Proteintech Group brand and is not available to purchase from any other manufacturer.

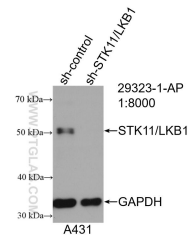
Données de validation sélectionnées



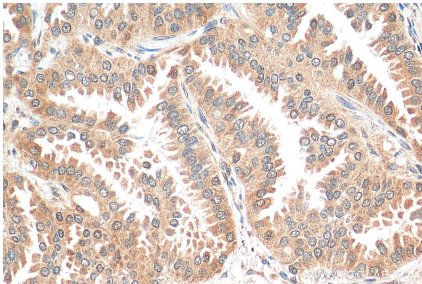
Various lysates were subjected to SDS PAGE followed by western blot with 29323-1-AP (STK11 antibody) at dilution of 1:5000 incubated at room temperature for 1.5 hours.



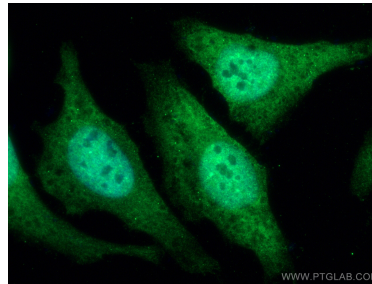
WB result of STK11/LKB1 antibody (29323-1-AP; 1:8000; incubated at room temperature for 1.5 hours) with sh-Control and sh-STK11/LKB1 transfected MCF-7 cells.



WB result of STK11/LKB1 antibody (29323-1-AP; 1:8000; incubated at room temperature for 1.5 hours) with sh-Control and sh-STK11/LKB1 transfected A431 cells.



Immunohistochemical analysis of paraffin-embedded human lung cancer tissue slide using 29323-1-AP (STK11/LKB1 antibody) at dilution of 1:600 (under 40x lens). Heat mediated antigen retrieval with Tris-EDTA buffer (pH 9.0).



Immunofluorescent analysis of (4% PFA) fixed HeLa cells using STK11/LKB1 antibody (29323-1-AP) at dilution of 1:200 and CoraLite®488-Conjugated AffiniPure Goat Anti-Rabbit IgG(H+L).